

# Northeast Region Stream Accesses Greater than 40 Acres

Black Hawk Access  
Callahan Mound Access  
Cedar Bluff Access  
Dodd Access  
Dunn Ford Access  
McPike Access  
Mound View Access  
Soulard Access  
Sunnyside School Access  
Sunrise Access  
Tolona Access  
White Oak Bend Access  
Woodlawn Access

## Ten-Year Area Management Plan FY 2016-2025



*Jesi D. Allen*  
Forestry Division Chief

*11-5-15*  
Date

*Joel W. Porath*  
Wildlife Division Chief

*11/17/15*  
Date

**Northeast Region Stream Accesses Greater than 40 Acres  
Management Plan Approval Page**

**PLANNING TEAM**

Chris Williamson, Fisheries Management Biologist

Kyle Monroe, Resource Forester

Darlene Bryant, Wildlife Management Biologist

Chad Smith, Wildlife Management Biologist

Ryan Kelly, Wildlife Biologist

**NORTHEAST REGION**

RCT Chair

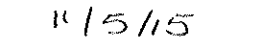
  
Signature

  
Date

**UNIT COORDINATION TEAM**


Forest Management Chief

  
Signature

  
Date

Wildlife Management Chief

  
Signature

  
Date

## OVERVIEW

This plan covers 13 public stream accesses, greater than 40 acres, in the Northeast Region.

Area Name	Area Number	Year Acquired	Acres	County	Administrative Responsibility	Maintenance Responsibility
Black Hawk Access	8319	1983	137	Marion	Wildlife	Forestry
Callahan Mound Access	8327	1983	127	Marion	Forestry	Forestry
Cedar Bluff Access	8028	1980	40	Monroe	Wildlife	Wildlife
Dodd Access	8227	1982	40	Macon	Wildlife	Wildlife
Dunn Ford Access	8216	1982	136	Marion	Wildlife	Forestry
McPike Access	9520	1995	79	Marion	Wildlife	Forestry
Mound View Access	9523	1995	41	Shelby	Forestry	Forestry
Soulard Access	8312	1983	270	Marion	Forestry	Forestry
Sunnyside School Access	9518	1995	120	Lewis	Wildlife	Forestry
Sunrise Access	9223	1992	40	Marion	Forestry	Forestry
Tolona Access	9521	1995	176	Lewis	Wildlife	Forestry
White Oak Bend Access	9010	1990	160	Knox	Wildlife	Forestry
Woodlawn Access	8814	1988	65	Monroe	Wildlife	Wildlife

### Statements of Purpose:

#### A. Strategic Direction

These stream accesses are managed to provide users safe and convenient access to streams for boat and/or bank anglers; encourage healthy populations of wildlife and aquatic species; demonstrate sound riparian and floodplain management practices; and provide compatible recreational opportunities.

#### B. Desired Future Condition

The desired future conditions are accesses that provide safe and convenient entrance to streams; a healthy forest and woodland community with interspersed open fields, comprised of agriculture, grassland and old fields; and high-quality riparian and floodplain areas.

#### C. Federal Aid Statement

N/A

## GENERAL INFORMATION AND CONDITIONS

### I. Special Considerations

Area Name	Priority Area	Natural Area
Black Hawk Access	South Fabius Fisheries Priority Watershed	None
Callahan Mound Access	None	None
Cedar Bluff Access	Natural Resources Conservation Service (NRCS) Mississippi River Basin Initiative Watershed	None
Dodd Access	None	None
Dunn Ford Access	South Fabius Fisheries Priority Watershed, South Fabius River Aquatic Conservation Opportunity Area	None
McPike Access	South Fabius Fisheries Priority Watershed	None
Mound View Access	NRCS Mississippi River Basin Initiative Watershed	None
Soulard Access	None	None
Sunnyside School Access	None	None
Sunrise Access	South Fabius Fisheries Priority Watershed	None
Tolona Access	None	None
White Oak Bend Access	South Fabius Fisheries Priority Watershed	None
Woodlawn Access	NRCS Mississippi River Basin Initiative Watershed	None

### II. Important Natural Features and Resources

Area Name	Species of Conservation Concern	Caves	Springs
Black Hawk Access	Yes <sup>1</sup>	None	None
Callahan Mound Access	None	None	None
Cedar Bluff Access	None	None	None
Dodd Access	None	None	None
Dunn Ford Access	Yes <sup>1</sup>	None	None
McPike Access	None	None	None
Mound View Access	None	None	None
Soulard Access	None	None	None
Sunnyside School Access	Yes <sup>1</sup>	None	None
Sunrise Access	None	None	None
Tolona Access	None	None	None
White Oak Bend Access	None	None	None
Woodlawn Access	Yes <sup>1</sup>	None	None

<sup>1</sup>Species of conservation concern are known from this area. Area Managers should consult the Natural Heritage Database annually and review all management activities with the Natural History Biologist.

**III. Existing Infrastructure**

Area Name	Concrete Boat Ramps	Camping Pads	Parking Lots
Black Hawk Access	1	0	2
Callahan Mound Access	0	0	2
Cedar Bluff Access	0	0	1
Dodd Access	1	0	1
Dunn Ford Access	0	0	1
McPike Access	0	0	2
Mound View Access	0	0	0
Soulard Access	1	0	1
Sunnyside School Access	0	0	1
Sunrise Access	0	0	0
Tolona Access	1	2	2
White Oak Bend Access	0	0	1
Woodlawn Access	0	0	1

**IV. Area Restrictions or Limitations**

Area	Deed Restrictions	Federal Interest	Ease-ments	Cultural Resources	Hazards or Hazardous Materials	Endangered Species	Boundary Issues
Black Hawk Access	None	Yes <sup>1</sup>	None	None	None	None	None
Callahan Mound Access	None	Yes <sup>2</sup>	None	Yes <sup>3</sup>	None	None	None
Cedar Bluff Access	None	Yes <sup>2</sup>	None	None	None	None	None
Dodd Access	None	Yes <sup>1</sup>	None	Yes <sup>3</sup>	None	None	None
Dunn Ford Access	None	Yes <sup>2</sup>	None	None	None	None	Yes <sup>4</sup>
McPike Access	None	Yes <sup>2</sup>	Power line	None	None	None	None
Mound View Access	None	Yes <sup>2</sup>	None	None	None	None	Yes <sup>4</sup>
Soulard Access	None	Yes <sup>1</sup>	None	None	None	None	Yes <sup>4</sup>
Sunnyside School Access	None	Yes <sup>2</sup>	None	None	None	None	None
Sunrise Access	None	Yes <sup>2</sup>	None	Yes <sup>3</sup>	None	None	None
Tolona Access	None	Yes <sup>1</sup>	None	None	None	None	None
White Oak Bend Access	None	Yes <sup>2</sup>	None	None	None	None	None
Woodlawn Access	None	Yes <sup>2</sup>	None	None	None	None	None

<sup>1</sup>Federal funds (Sport Fish Restoration) were used in the development of this area, or a portion thereof. The Missouri Department of Conservation (the Department) must maintain the developed project throughout its useful life. Federal funds may also be used in the management of this land. Fish and wildlife agencies may not allow recreational activities and related facilities that would interfere with the purpose for which the State is managing the land. Other uses may be acceptable and must be assessed in each specific situation.

<sup>2</sup>Federal funds may be used in the management of this land. Fish and wildlife agencies may not allow recreational activities and related facilities that would interfere with the purpose for which the State is managing the land. Other uses may be acceptable and must be assessed in each specific situation.

<sup>3</sup>Records kept with the Department Environmental Compliance Specialist. Managers should follow Best Management Practices for Cultural Resources found in the Department Resource Policy Manual.

<sup>4</sup>Establishing accurate and identifiable boundary markers is a priority for this property.

## MANAGEMENT CONSIDERATIONS

### V. Terrestrial Resource Management Considerations

#### **Challenges and Opportunities:**

- 1) Wooded riparian corridors provide many important functions along stream channels. One of the biggest challenges to providing safe and convenient stream access is maintaining the function of these wooded riparian corridors.
- 2) The open land on many of the accesses is comprised of grasslands, old fields, and agriculture fields. Several of the grassland and old-field habitats have been invaded by both sericea lespedeza and fescue, with autumn olive scattered throughout. One of the challenges associated with open land management will be control and overall reduction of invasive plants.
- 3) The accesses are popular destinations for deer and turkey hunters, as well as a few small game hunters. Management of open land should continue to provide food and cover for wildlife, in order to meet hunter expectations.

**Management Objective 1:** Establish or maintain a forested corridor free from invasive plants along all streams on the accesses.

**Strategy 1:** Conduct a forest inventory to determine management needs, the location and width of existing forested riparian corridors and priority locations for natural regeneration or planting. (Wildlife, Forestry)

**Strategy 2:** Maintain a forested corridor through natural regeneration or planting. In flood prone areas, a minimum 200-foot corridor should be maintained, where not limited by access boundary, access road, or parking lot. In upland bluff areas,

a minimum of 100 feet should be maintained, where not limited by area boundary, access road or parking lot. Where access roads or parking lots are in the stream corridor, they should be relocated outside of the corridor, if feasible. (Wildlife, Forestry)

**Strategy 2:** Inspect riparian corridors every three years to determine the need for adjustments.

**Strategy 3:** Reforest old fields and open lands as determined by the forest survey. (Wildlife, Forestry)

**Strategy 4:** Monitor and reduce or eradicate invasive plants where present. (Wildlife, Forestry)

**Strategy 5:** Follow the *Watershed and Stream Management Guidelines for Lands and Waters Managed by Missouri Department of Conservation* (Missouri Department of Conservation, 2009) for all management activities. (Wildlife, Forestry)

**Management Objective 2:** Maintain open land acres in a productive state for wildlife, and reduce or eradicate invasive species.

**Strategy 1:** Cash rent current row crop acres annually, with 10 percent of the corn and up to 20 percent of the wheat left as food for wildlife. See appendices for each access. (Wildlife)

**Strategy 2:** Monitor and reduce or eradicate invasive plants where present. (Wildlife, Forestry)

**Management Objective 3:** Manage open land habitat to enhance deer, turkey, and small game populations; and provide for and meet hunter expectations.

**Strategy 1:** Plant sunflowers at certain accesses (e.g., Tolona, White Oak Bend, and McPike accesses), when conditions are favorable to provide habitat and hunting opportunity for doves. (Wildlife, Forestry)

**Strategy 2:** Provide food plots as needed. (Wildlife, Forestry)

**Strategy 3:** Enhance edge habitat through a variety of treatments and techniques. (Wildlife, Forestry)

**Strategy 4:** Promote and enhance native grass and forb stands. (Wildlife, Forestry)

## VI. Aquatic Resource Management Considerations

### Challenges and Opportunities:

Concrete boat ramps on streams can alter flow direction and increase stream bank erosion rates.

**Management Objective 4:** Ensure boat ramps are not causing excessive stream bank erosion (greater than 1 foot per year).

**Strategy 1:** Monitor stream banks adjacent to boat ramps to ensure erosion rates are acceptable (less than 1 foot per year). (Wildlife, Forestry)

## VII. Public Use Management Considerations

### **Challenges and Opportunities:**

- 1) To ensure accesses are inviting to the public, these accesses are maintained by mowing and litter removal on a routine basis.
- 2) Unauthorized uses often occur on the accesses. Unauthorized all-terrain vehicle use and littering are the biggest enforcement challenges on these accesses.

**Management Objective 5:** Provide accesses that are safe and attractive to the public.

**Strategy 1:** Ensure accesses are mowed and litter is removed according to Department maintenance standards. (Wildlife, Forestry)

**Management Objective 6:** Inform public about area regulations.

**Strategy 1:** Maintain signs according to Department policy. (Wildlife, Forestry)

**Strategy 2:** Conduct routine patrols to maintain acceptable area use. (Protection)

**Strategy 3:** Maintain accurate and timely information on the Department's Atlas Database. Review information annually. (Wildlife, Forestry)

## VIII. Administrative Considerations

### **Challenges and Opportunities:**

- 1) There may be opportunities to expand the boundaries of some accesses to provide additional recreational opportunity and resource conservation.
- 2) There may be opportunities to improve user access at Sunnyside School Access and Mound View Access. Currently, there is no infrastructure at Mound View Access and there is one parking lot at Sunnyside School Access. A concrete boat ramp would allow area users easier access to the stream and would facilitate a quality day-float down to the boat ramp on the Mississippi River at LaGrange.
- 3) Sunrise Access lies within a very unstable reach of the South Fabius River. This instability has precluded any infrastructure development. After flooding in 2008, streambank erosion threatened the county road running through the access. The Marion County Highway Department moved the road away from the river and the old roadbed reverted to the Department. This reach of river will likely remain





## APPENDICES

### **Public Input Summary:**

The draft Northeast Region Stream Accesses Greater Than 40 Acres Management Plan was available for a public comment period July 1–31, 2015. The Missouri Department of Conservation received comments from four respondents (Appendix 41). The Northeast Region Stream Accesses Greater Than 40 Acres Planning Team carefully reviewed and considered these ideas as they finalized this document. A brief summary of public input themes, including how they were incorporated or why they were not, can be found below. Rather than respond to each individual comment, comments are grouped into general themes and are addressed collectively.

Department responses to themes and issues identified through Northeast Region Stream Accesses Greater Than 40 Acres public comment period

### **Suggests adding food plots to old field portion of Woodlawn Access.**

The old field at Woodlawn Access is currently being managed for native warm season grasses. A large majority of the land surrounding the access is in row-crop production. Keeping the old fields at the access in native warm season grasses provides a diverse habitat type that is beneficial to a wide range of game and non-game species.

### **Supports prescribed burns at Tolona Access.**

Thank you for your support for our efforts to manage our native habitats with prescribed fire.

### **Opposes fire as a management tool at White Oak Bend Access.**

Prescribed fire has and continues to be a key management tool in controlling succession in grassland, old field, and forest habitats on White Oak Bend Access. Without the use of fire, old fields and grasslands become too dense to be quality nesting and brood rearing habitat for both game and non-game species. Species diversity is reduced in grassland, old field and woodland habitats where fire is excluded. Depending on weather conditions, prescribed burns are conducted on 7 to 60 acres annually on the area.

### **Suggests allowing open fields at White Oak Bend Access to reforest.**

Expansion of the riparian corridor is a priority for White Oak Bend Access to assist with stream protection. Forest surveys will be conducted and additional reforestation may occur in other open areas. Open fields are maintained on White Oak Bend Access because it is a popular destination for deer and turkey hunters, as well as a small game hunters. Management of open land provides food and cover for wildlife, in order to meet hunter expectations.

**Suggests allowing horseback riding, camping, and adding picnic tables to Tolona Access.**

Currently there are no horseback riding opportunities available on this conservation area. Due to its small size, it would be difficult to develop a trail system and having trails open to this activity would increase the potential of interference with existing area uses. While the planning team understands a desire by some to develop this activity on the area, there are no plans for adding equestrian trails at this location. The Area Manager will suggest to users who request this activity to pursue this recreational opportunity on Deer Ridge Conservation Area (13 miles away), Henry Sever Lake Conservation Area (20 miles away), and Charlie Heath Memorial Conservation Area (41 miles away) all which are open seasonally to equestrian use.

Camping is allowed on Tolona Access. Two gravel camping pads are provided near the river, each have a fire ring. Camping is also allowed adjacent to area parking lots. No picnic tables are provided, as they typically are subject to vandalism and theft on remote conservation areas such as Tolona Access.

**Neighboring landowner offers to sell property adjacent to White Oak Bend Access.**

The Missouri Department of Conservation purchases land from willing sellers. As land in this area becomes available, staff will review its ability to meet program benefits of the Conservation Department and work to acquire lands that meet the needs of forest, fish, and wildlife.

**Suggests acquiring land between Woodlawn Access and Highway 151 bridge.**

The Missouri Department of Conservation purchases land from willing sellers. As land in this area becomes available, staff will review its ability to meet program benefits of the Conservation Department and work to acquire lands that meet the needs of forest, fish, and wildlife.

**References:**

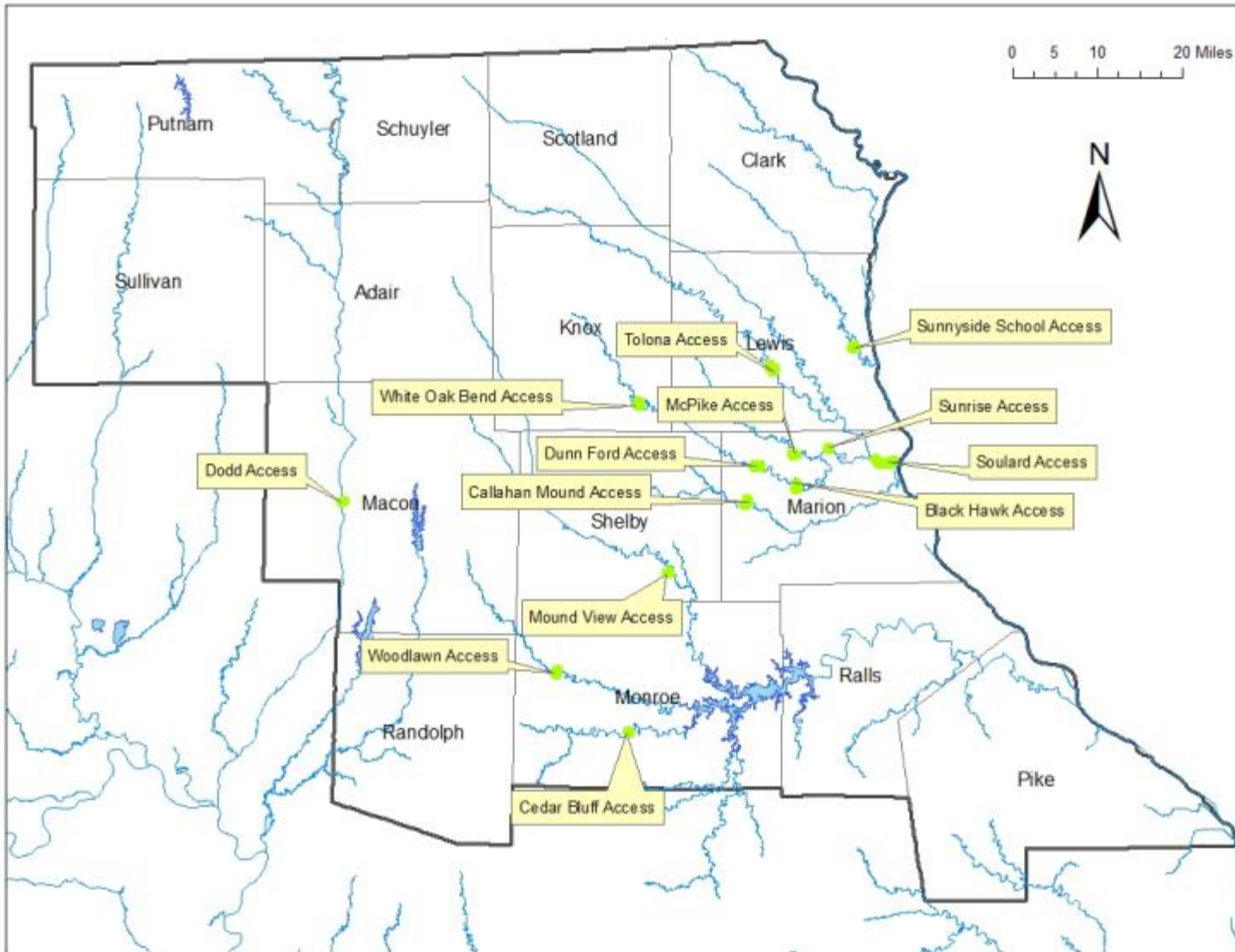
Missouri Department of Conservation. (2009). *Watershed and stream management guidelines for lands and waters managed by Missouri Department of Conservation*. Jefferson City, Missouri: Missouri Department of Conservation.

**Appendices:**

- Appendix 1. Northeast Region Stream Accesses Map
- Appendix 2. Black Hawk Access Area Background
- Appendix 3. Black Hawk Access Area Map
- Appendix 4. Black Hawk Access Cover Type Map
- Appendix 5. Callahan Mound Access Area Background
- Appendix 6. Callahan Mound Access Area Map
- Appendix 7. Callahan Mound Access Cover Type Map
- Appendix 8. Cedar Bluff Access Area Background
- Appendix 9. Cedar Bluff Access Area Map

- Appendix 10. Cedar Bluff Access Cover Type Map
- Appendix 11. Dodd Access Area Background
- Appendix 12. Dodd Access Area Map
- Appendix 13. Dodd Access Cover Type Map
- Appendix 14. Dunn Ford Access Area Background
- Appendix 15. Dunn Ford Access Area Map
- Appendix 16. Dunn Ford Access Cover Type Map
- Appendix 17. McPike Access Area Background
- Appendix 18. McPike Access Area Map
- Appendix 19. McPike Access Cover Type Map
- Appendix 20. Mound View Access Area Background
- Appendix 21. Mound View Access Area Map
- Appendix 22. Mound View Access Cover Type Map
- Appendix 23. Soulard Access Area Background
- Appendix 24. Soulard Access Area Map
- Appendix 25. Soulard Access Cover Type Map
- Appendix 26. Sunnyside School Access Area Background
- Appendix 27. Sunnyside School Access Area Map
- Appendix 28. Sunnyside School Cover Type Map
- Appendix 29. Sunrise Access Area Background
- Appendix 30. Sunrise Access Area Map
- Appendix 31. Sunrise Access Cover Type Map
- Appendix 32. Tolona Access Area Background
- Appendix 33. Tolona Access Area Map
- Appendix 34. Tolona Access Cover Type Map
- Appendix 35. White Oak Bend Access Area Background
- Appendix 36. White Oak Bend Access Area Map
- Appendix 37. White Oak Bend Access Cover Type Map
- Appendix 38. Woodlawn Access Area Background
- Appendix 39. Woodlawn Access Area Map
- Appendix 40. Woodlawn Access Cover Type Map
- Appendix 41. Northeast Region Stream Accesses Greater Than 40 Acres Management Plan  
Public Comments

**Appendix 1. Northeast Region Stream Accesses Map**



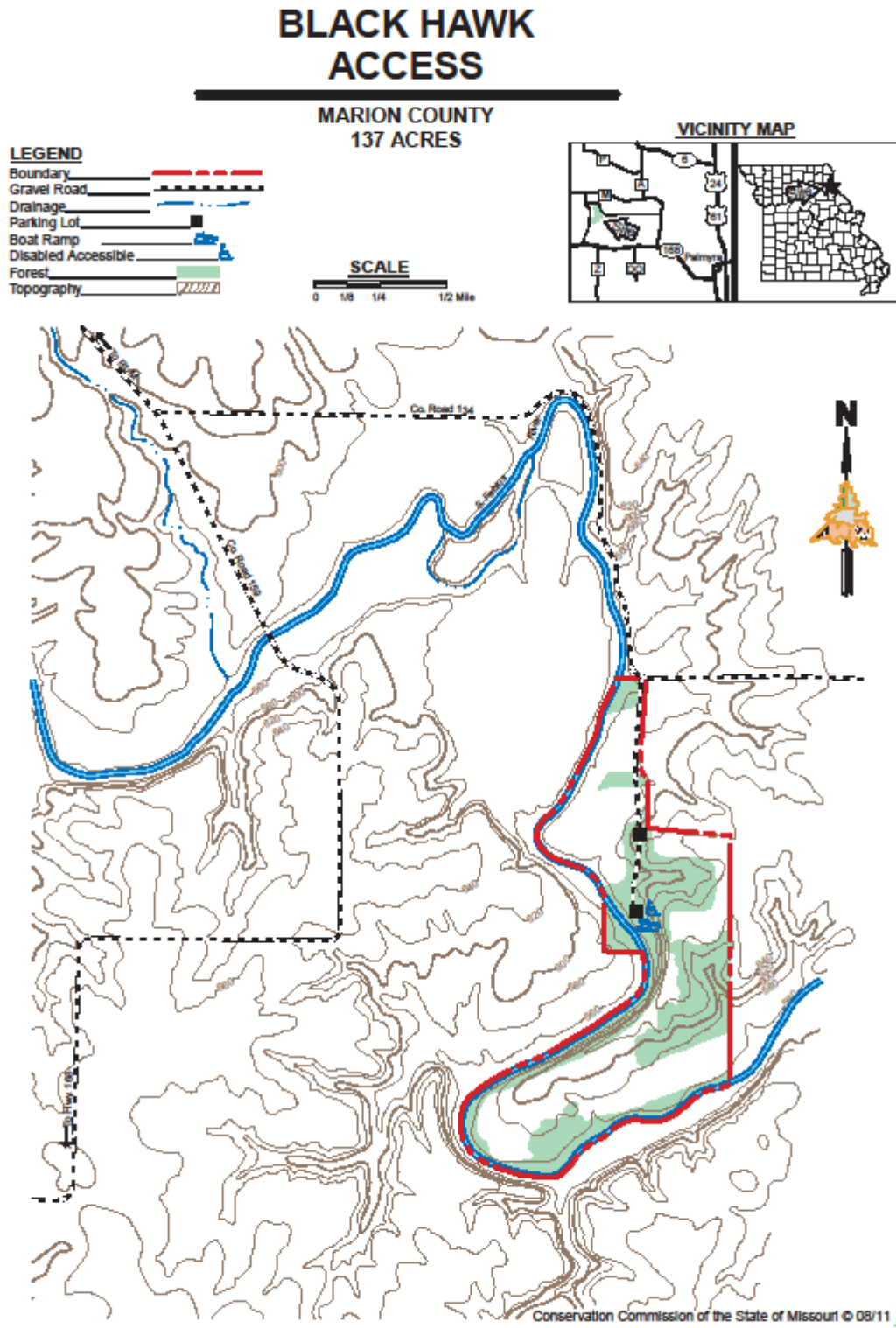
**Appendix 2. Black Hawk Access Area Background**

The access is about 10 miles downstream from Dunn Ford Access and provides a convenient destination for a day float. The Department purchased land for this access in 1984. The 137-acre access includes about 75 acres of riparian and upland timber and 62 acres of mostly open crop fields and old-field habitat. The South Fabius River forms the west and south boundaries of the access.

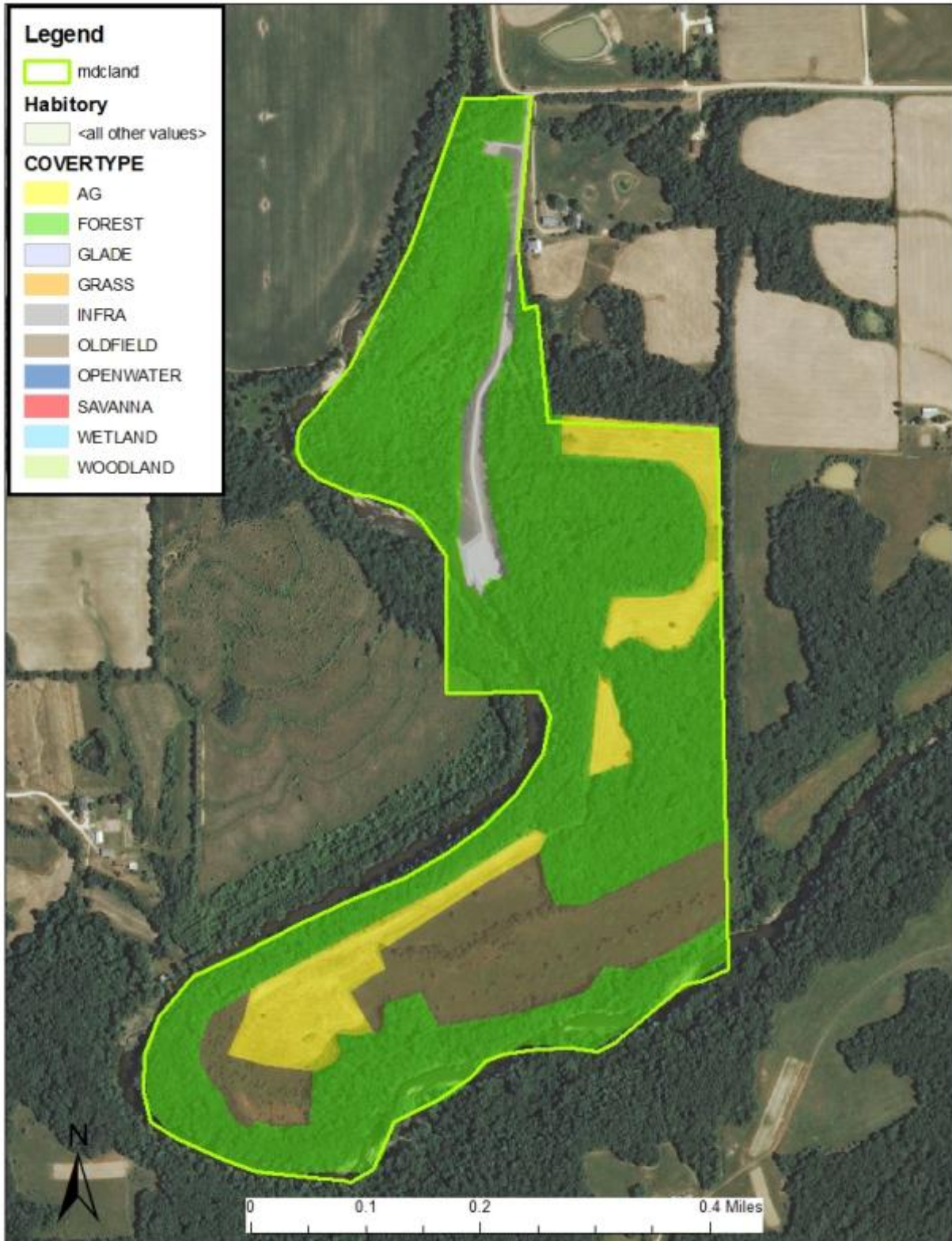
**Current Land and Water Types:**

<b>Land/Water Type</b>	<b>Acres</b>	<b>Feet</b>	<b>% of Area</b>
Forest and Woodland	75		55
Old Field	46		34
Cropland/Food Plot	16		11
<b>Total</b>	<b>137</b>		<b>100</b>
Stream Frontage		9,400	

### Appendix 3. Black Hawk Access Area Map



**Appendix 4. Black Hawk Access Cover Type Map**





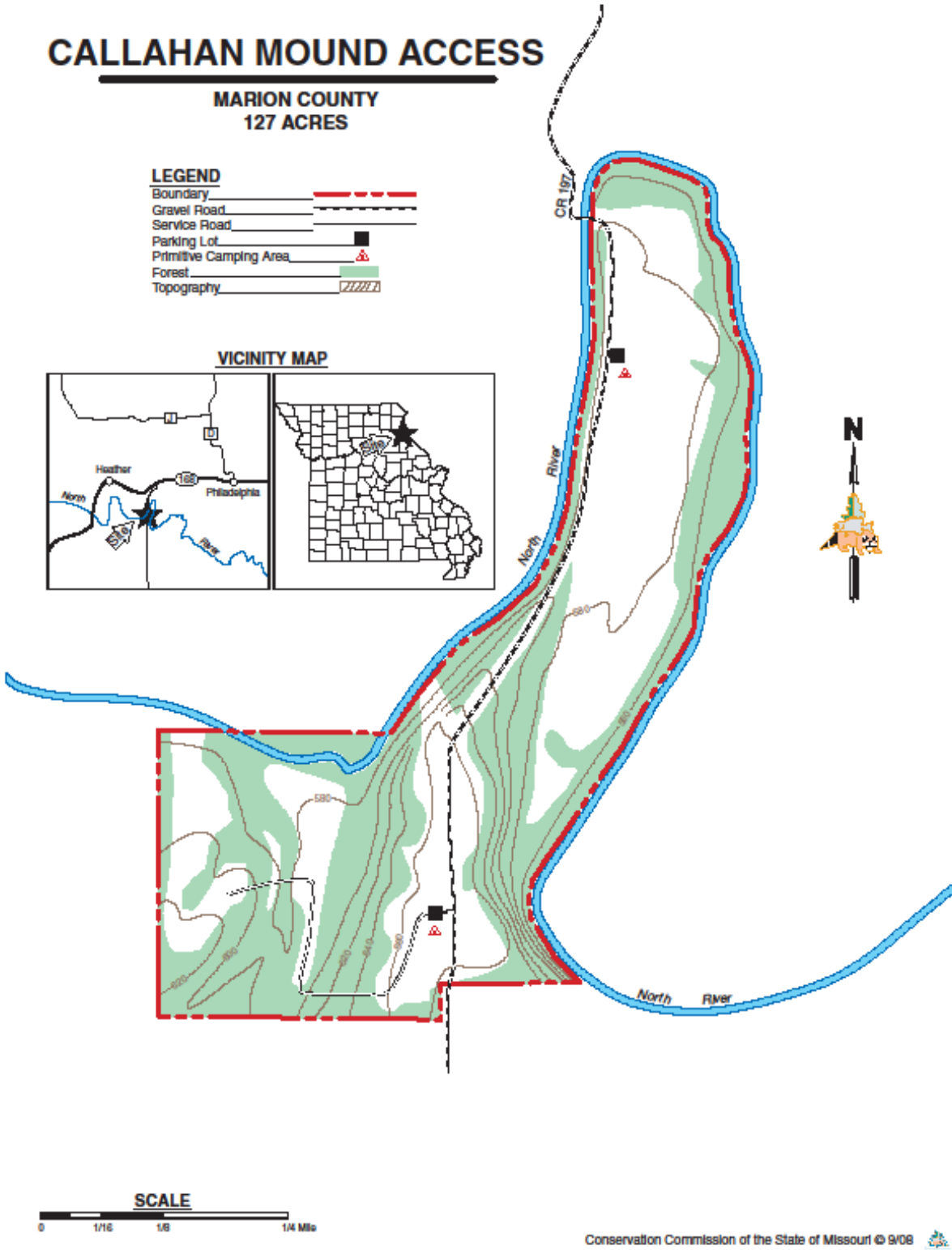
**Appendix 5. Callahan Mound Access Area Background**

Callahan Mound Access is a 127-acre access located in central Marion County, 2.5 miles west of Philadelphia. The access provides public access along the North River, which flows along the boundary. This access has diverse habitats that provide a variety of hunting, fishing and recreational opportunities.

**Current Land and Water Types:**


<b>Land/Water Type</b>	<b>Acres</b>	<b>Feet</b>	<b>% of Area</b>
Forest	80		63
Old Field	22.5		17
Cropland/Food Plot	18.5		15
Grass Fields	6		5
<b>Total</b>	<b>127</b>		<b>100</b>
Stream Frontage		9,345	

### Appendix 6. Callahan Mound Access Area Map

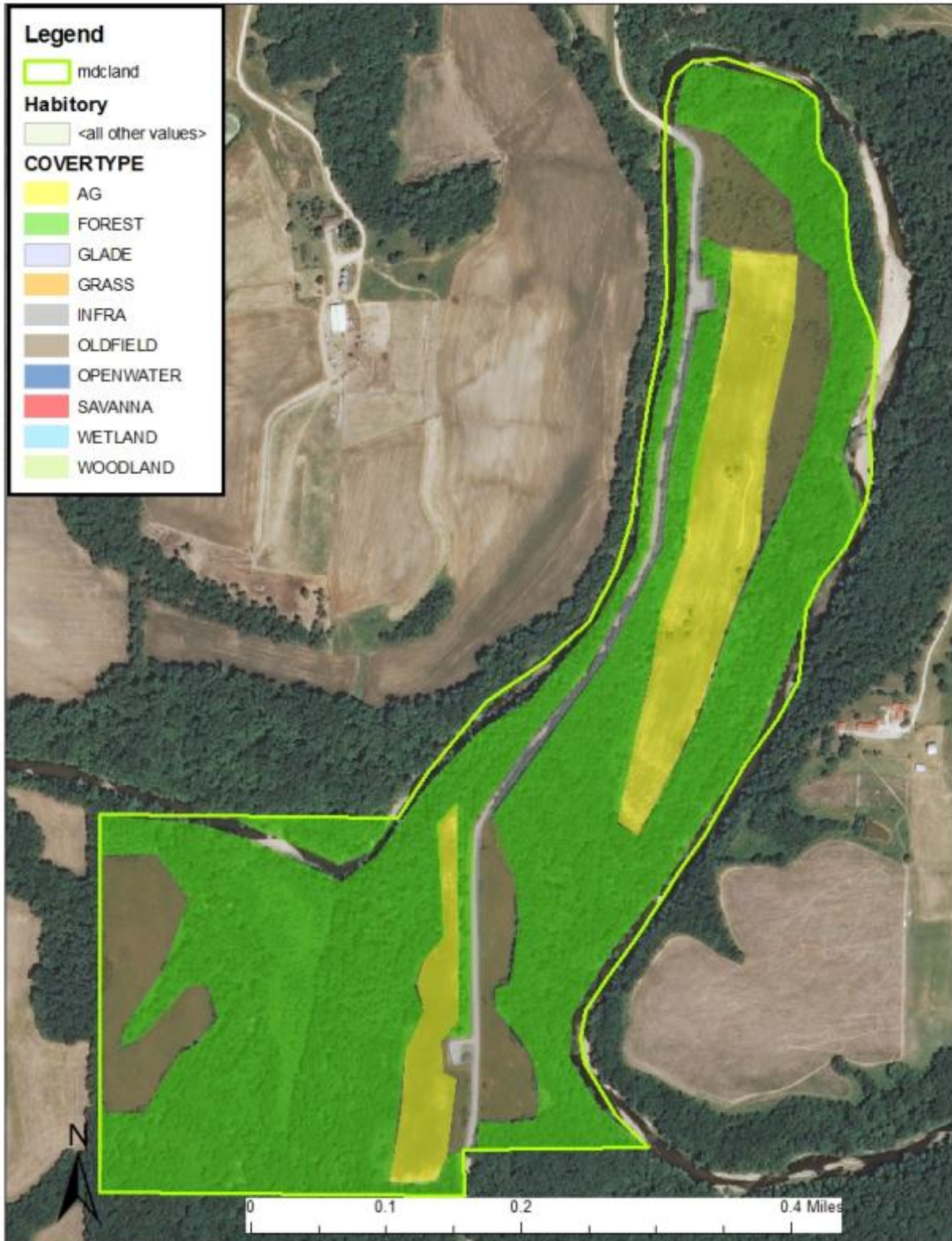


**SCALE**



Conservation Commission of the State of Missouri © 9/08 

Appendix 7. Callahan Mound Access Cover Type Map



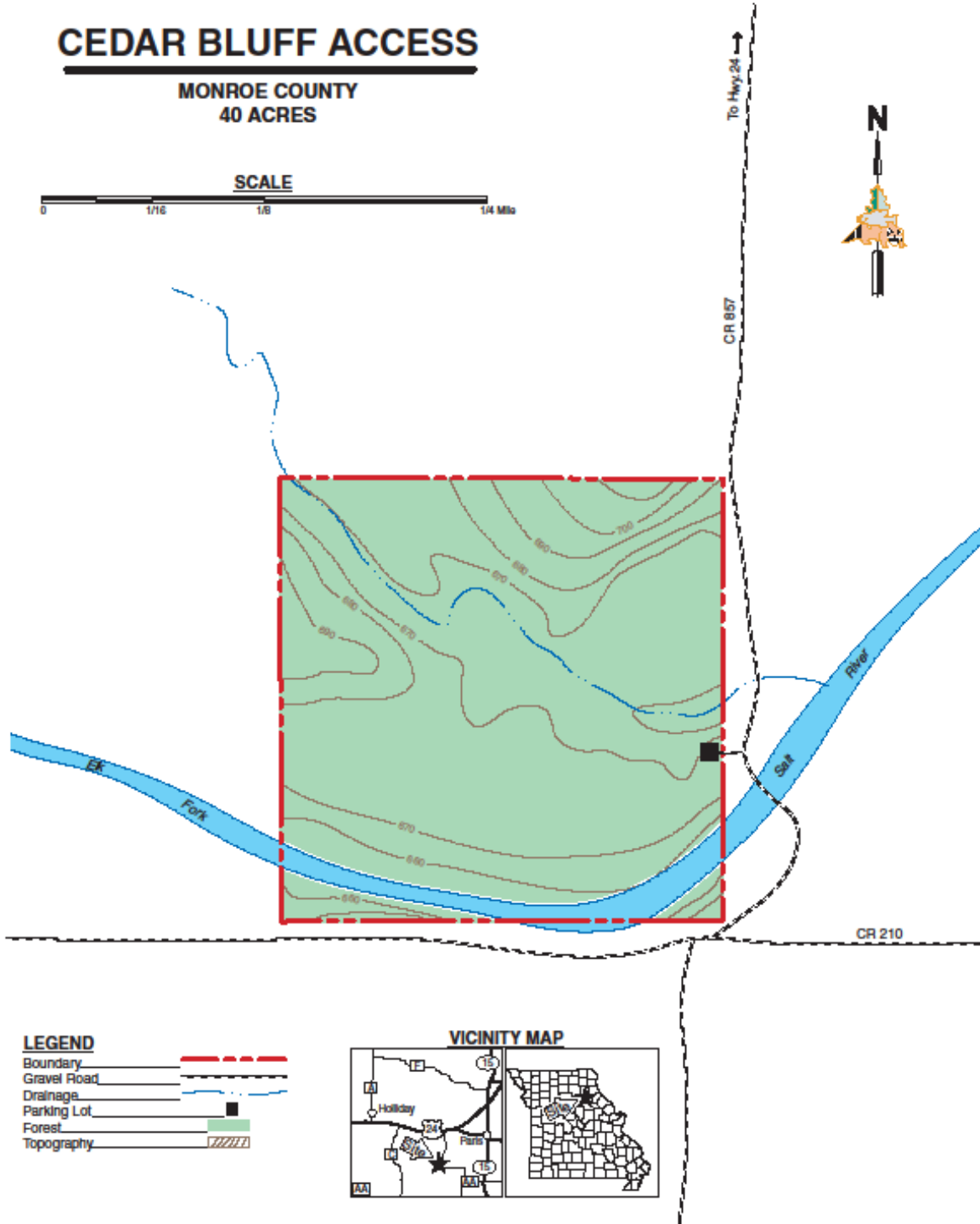
**Appendix 8. Cedar Bluff Access Area Background**

This access is located southwest of Paris on County Road 857. This forested access offers access to the Elk Fork of the Salt River.

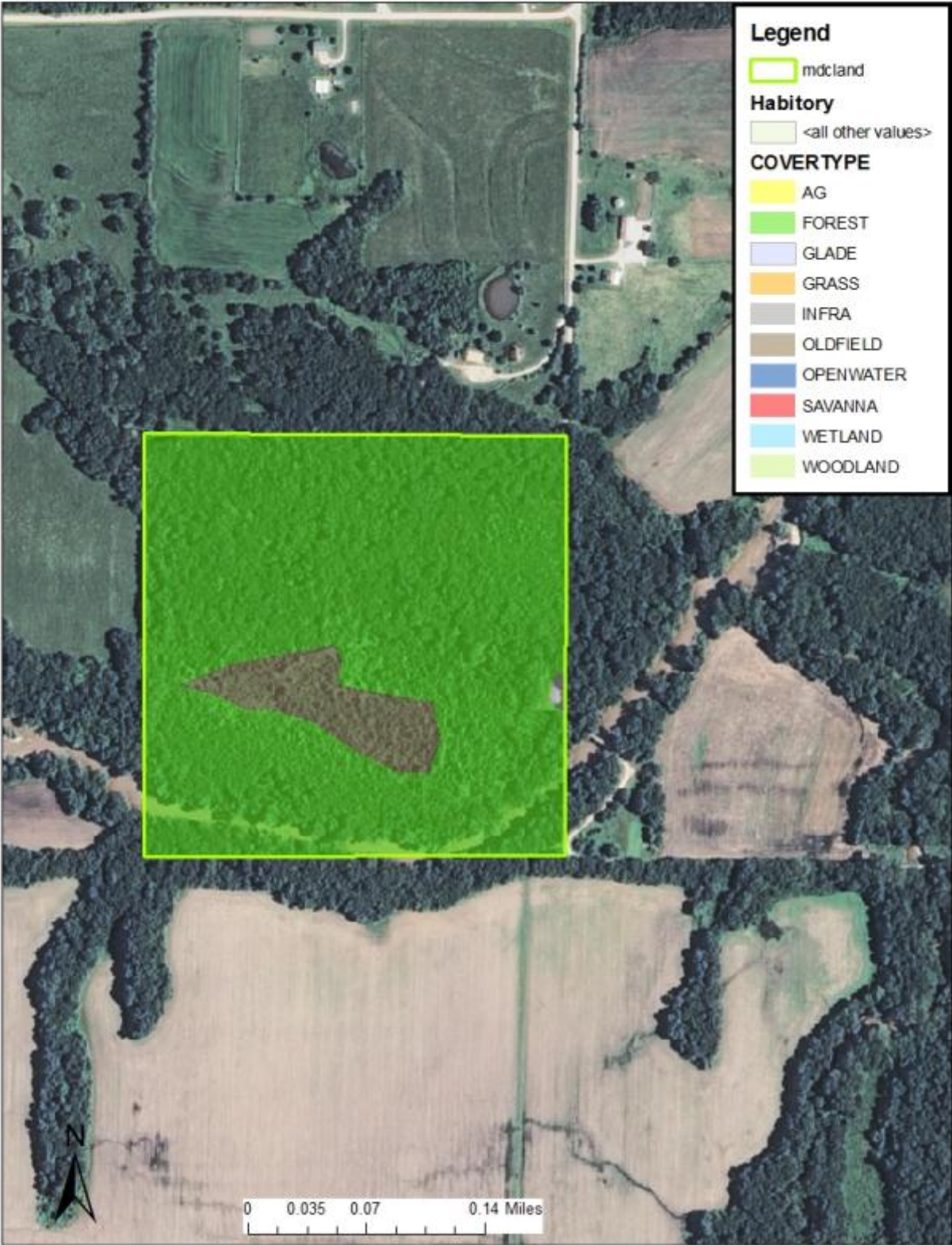
**Current Land and Water Types:**

<b>Land/Water Type</b>	<b>Acres</b>	<b>Feet</b>	<b>% of Area</b>
Forest and Woodland	39		97
Old Field	1		3
<b>Total</b>	<b>40</b>		<b>100</b>
Stream Frontage		1,320	

### Appendix 9. Cedar Bluff Access Area Map



Appendix 10. Cedar Bluff Cover Type Map



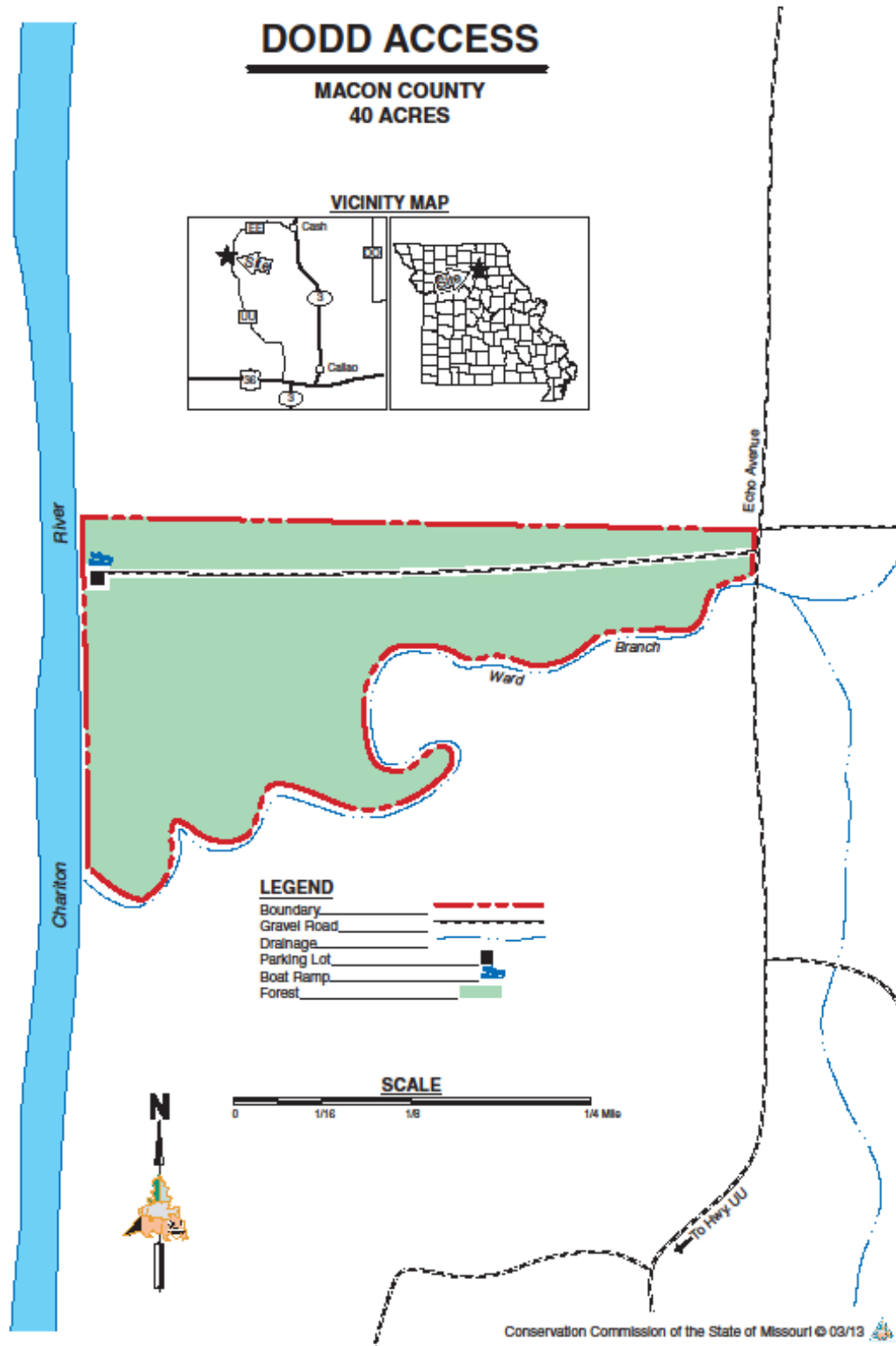
**Appendix 11. Dodd Access Area Background**

Dodd Access is located in Macon County, northwest of the town of Callao. It provides access to the Chariton River.

**Current Land and Water Types:**

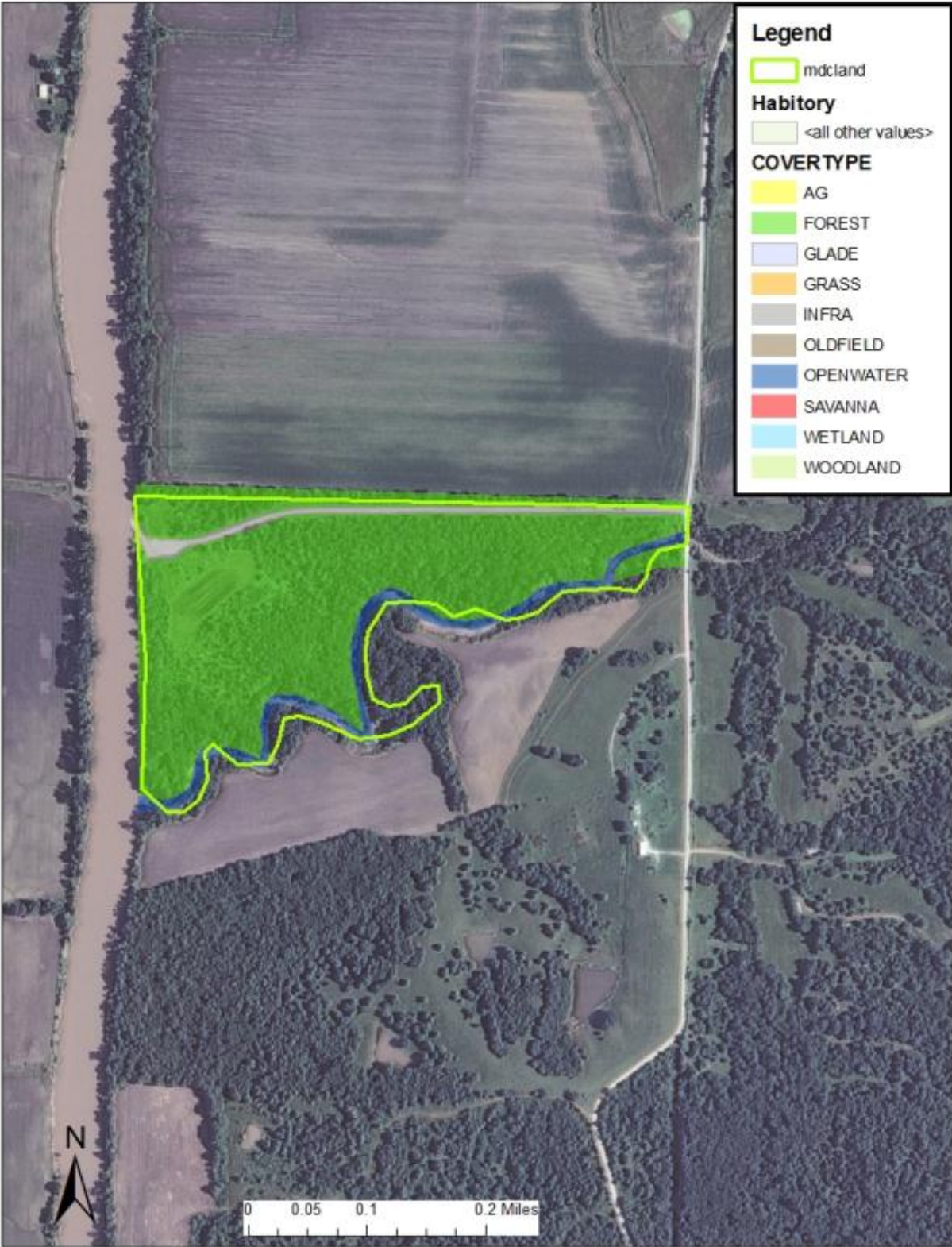
<b>Land/Water Type</b>	<b>Acres</b>	<b>Feet</b>	<b>% of Area</b>
Woodland	36		90
Old Field	4		10
<b>Total</b>	<b>40</b>		<b>100</b>
Stream Frontage		1,320	

### Appendix 12. Dodd Access Area Map





**Appendix 13. Dodd Access Cover Type Map**



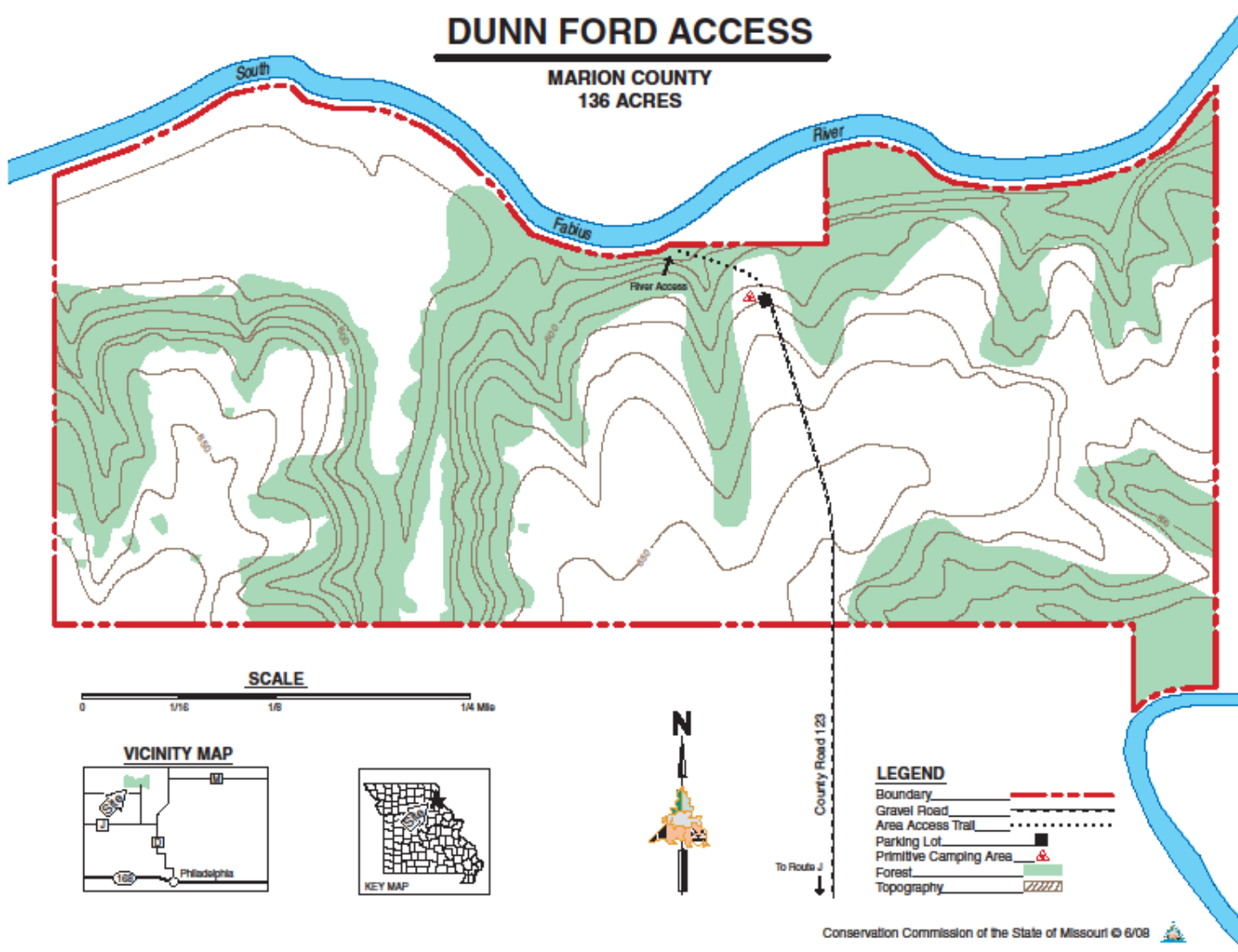
**Appendix 14. Dunn Ford Access Area Background**

The Department purchased land for the Dunn Ford Access in 1982 to provide additional public access to South Fabius River. The 136-acre access is mostly open fields with timber along the river and on upland hill slopes. Access to the river is by a short footpath off the access's parking lot. The South Fabius River extends 0.76 miles along the north boundary of the access. This small river has several pools and riffles and numerous root wads that provide good fish habitat. This portion of the river is suitable for bank fishing, wading and floating. The closest downstream access for canoeists is Black Hawk Access; it is 10 river miles downstream and a long day's float.

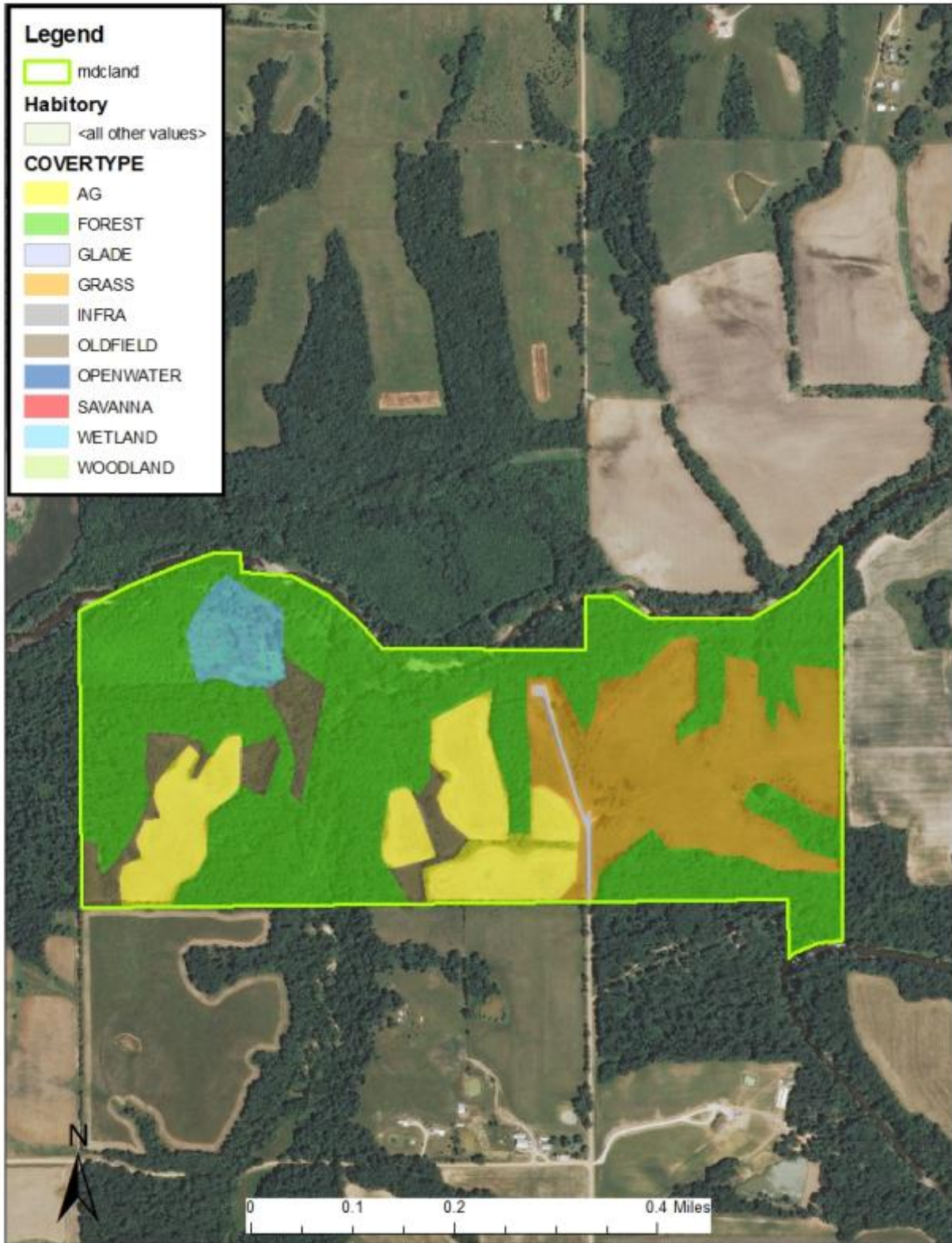
**Current Land and Water Types:**

<b>Land/Water Type</b>	<b>Acres</b>	<b>Feet</b>	<b>% of Area</b>
Forest and Woodland	65		48
Old Field	53		39
Cropland/Food Plot	18		13
<b>Total</b>	<b>136</b>		<b>100</b>
Stream Frontage		4,010	

Appendix 15. Dunn Ford Access Area Map



Appendix 16. Dunn Ford Access Cover Type Map



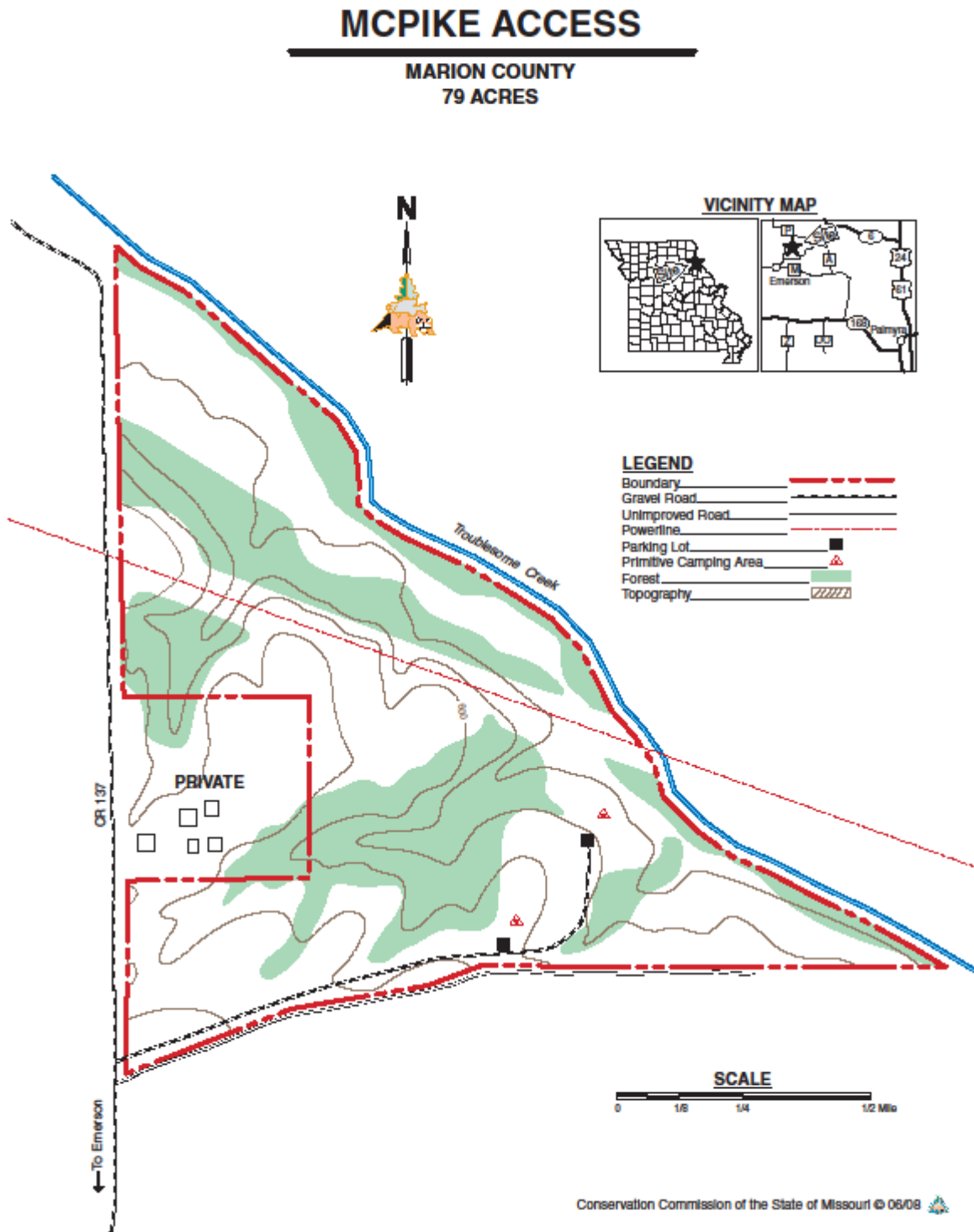
**Appendix 17. McPike Access Area Background**

The 79-acre McPike Access was purchased for use as a public fishing access in November 1994. This access provides good bank- and wade-fishing opportunities. McPike Access is named for the McPike family, who were among the first settlers in the access area. Members of this respected family were leaders in the community and included farmers, doctors, lawyers, judges and legislators. The McPike family played a major role in the development of the local community and Marion County. Troublesome Creek is classified as a high-quality prairie headwater stream and is one of the best examples of this stream type remaining in northern Missouri. McPike Access is the only Department access on this unique stream.

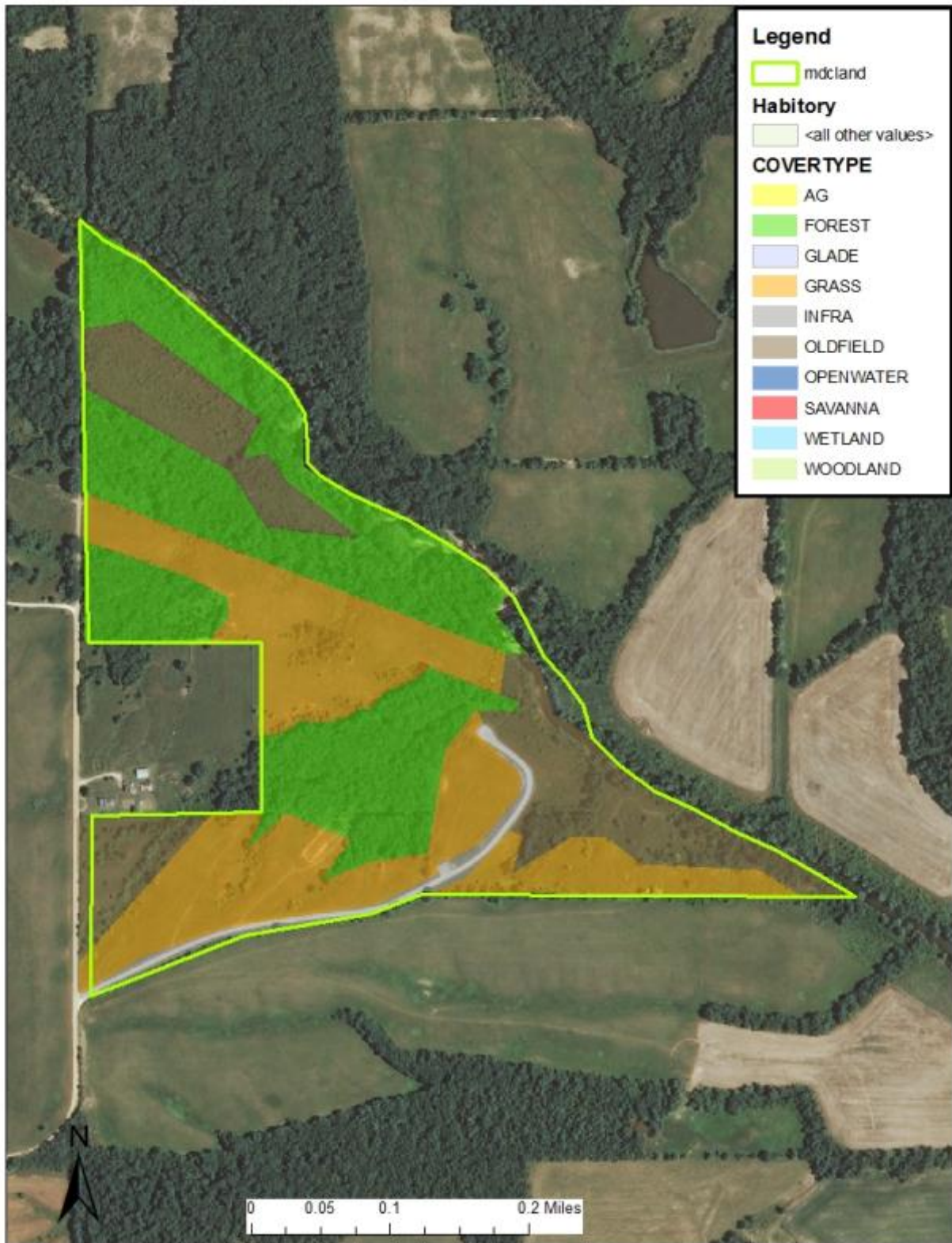
**Current Land and Water Types:**

<b>Land/Water Type</b>	<b>Acres</b>	<b>Feet</b>	<b>% of Area</b>
Forest and Woodland	39		50
Old Field	20		25
Grassland	20		25
<b>Totals</b>	<b>79</b>		<b>100</b>
Stream Frontage		3,900	

### Appendix 18. McPike Access Area Map



**Appendix 19. McPike Access Cover Type Map**



**Appendix 20. Mound View Access Area Background**

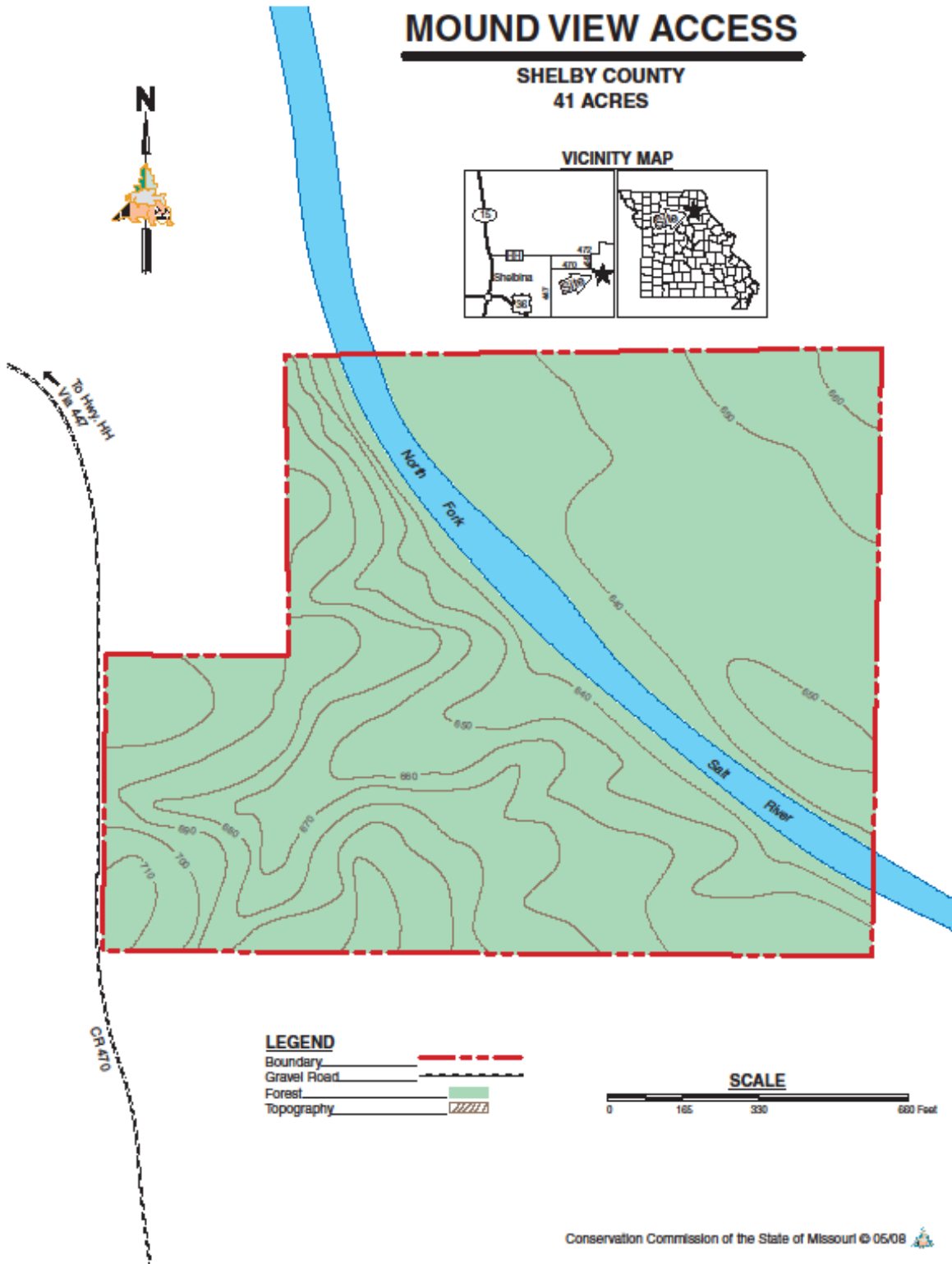
Mound View Access provides bank fishing and river access. The North Fork Salt River is known for seasonal runs of walleye, white bass and crappie upstream from Mark Twain Reservoir. The access provides the opportunity for wildlife viewing, mushroom hunting and other compatible activities.

**Current Land and Water Types:**

<b>Land/Water Type</b>	<b>Acres</b>	<b>Feet</b>	<b>% of Area</b>
Forest	30		73
Old Field	11		27
<b>Totals</b>	<b>41</b>		<b>100</b>
Stream Frontage		1,600	



### Appendix 21. Mound View Access Area Map



Appendix 22. Mound View Access Cover Type Map



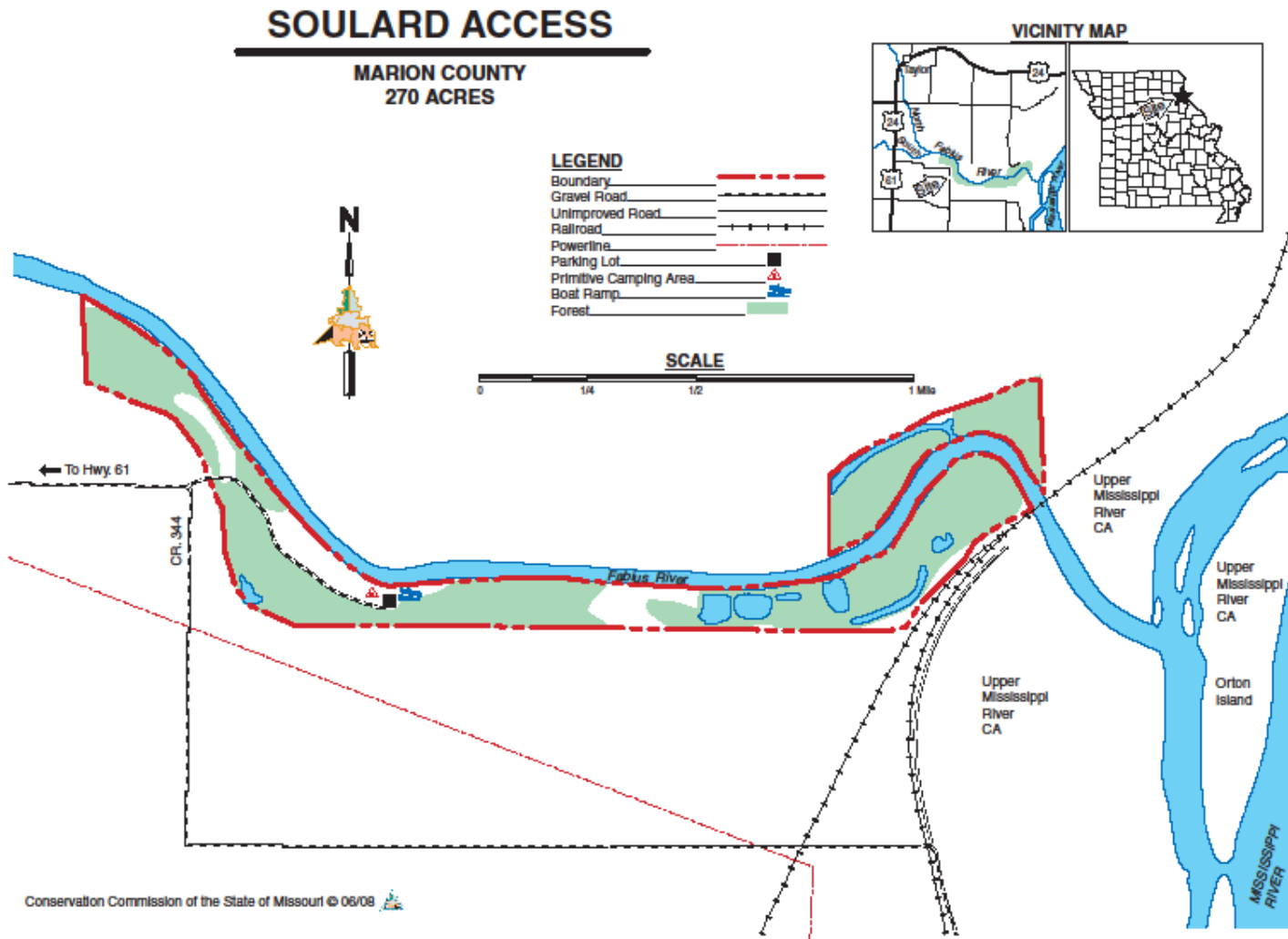
**Appendix 23. Souldard Access Area Background**

Souldard Access was named after the Spanish surveyor, Don Antonio Souldard, who traveled up the Mississippi River in 1800. Souldard was credited for naming the Fabius River, which flows through the access. Souldard Access provides a forested buffer along a 2.7-mile segment of the Fabius River, just before it flows into the Mississippi River. The bottomland hardwood forest helps stabilize and protect the stream. In 1991 and 1992, the Department improved a 600-foot project area known as the Souldard Access Stream Demonstration Area. The project was successful at stabilizing the bank, improving aquatic habitat diversity, and allowing for natural vegetation of flood tolerant trees where there was once bare soil.

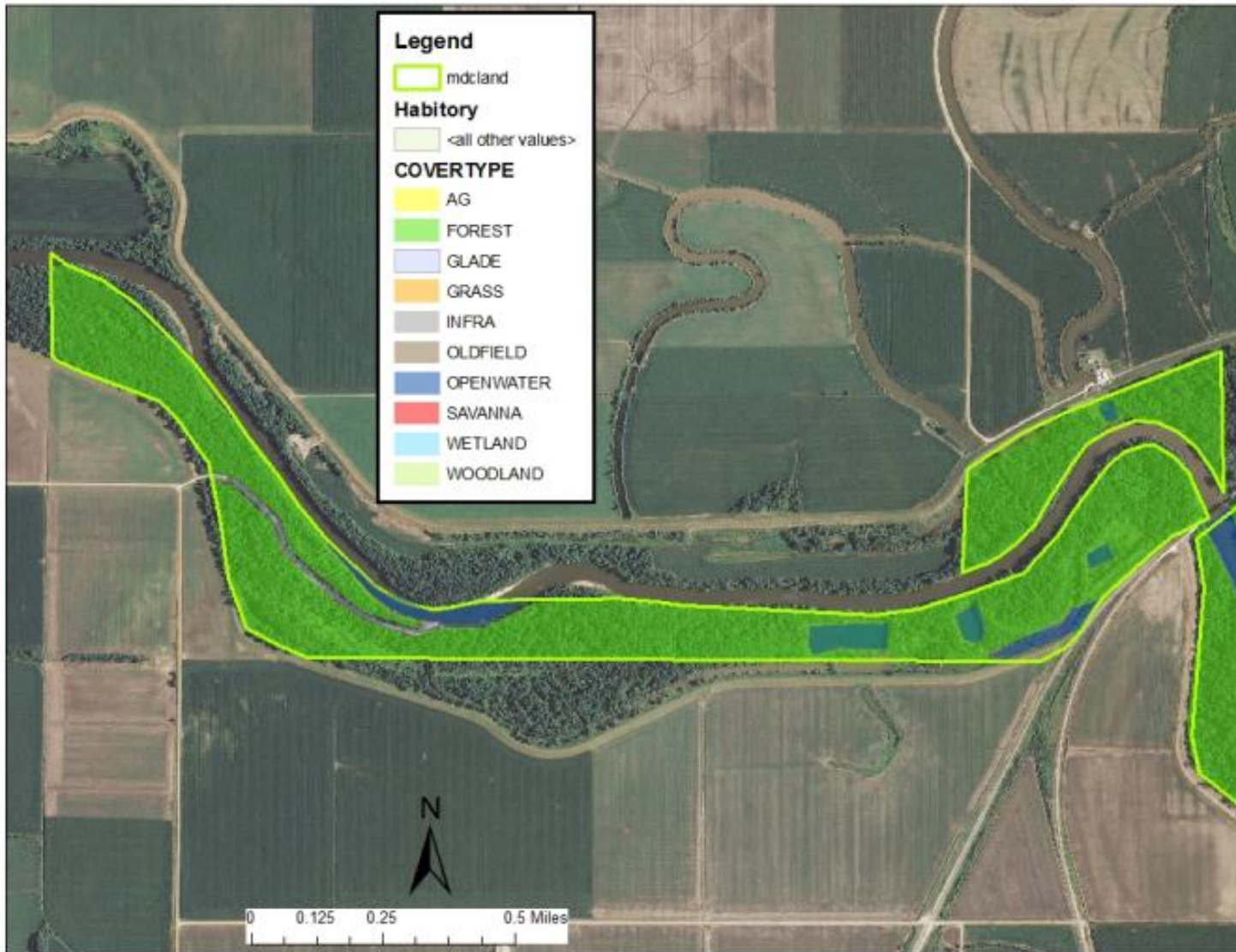
**Current Land and Water Types:**

<b>Land/Water Type</b>	<b>Acres</b>	<b>Feet</b>	<b>% of Area</b>
Forest	270		100
Stream Frontage		14,250	

Appendix 24. Soulard Access Area Map



Appendix 25. Soulard Access Cover Type Map



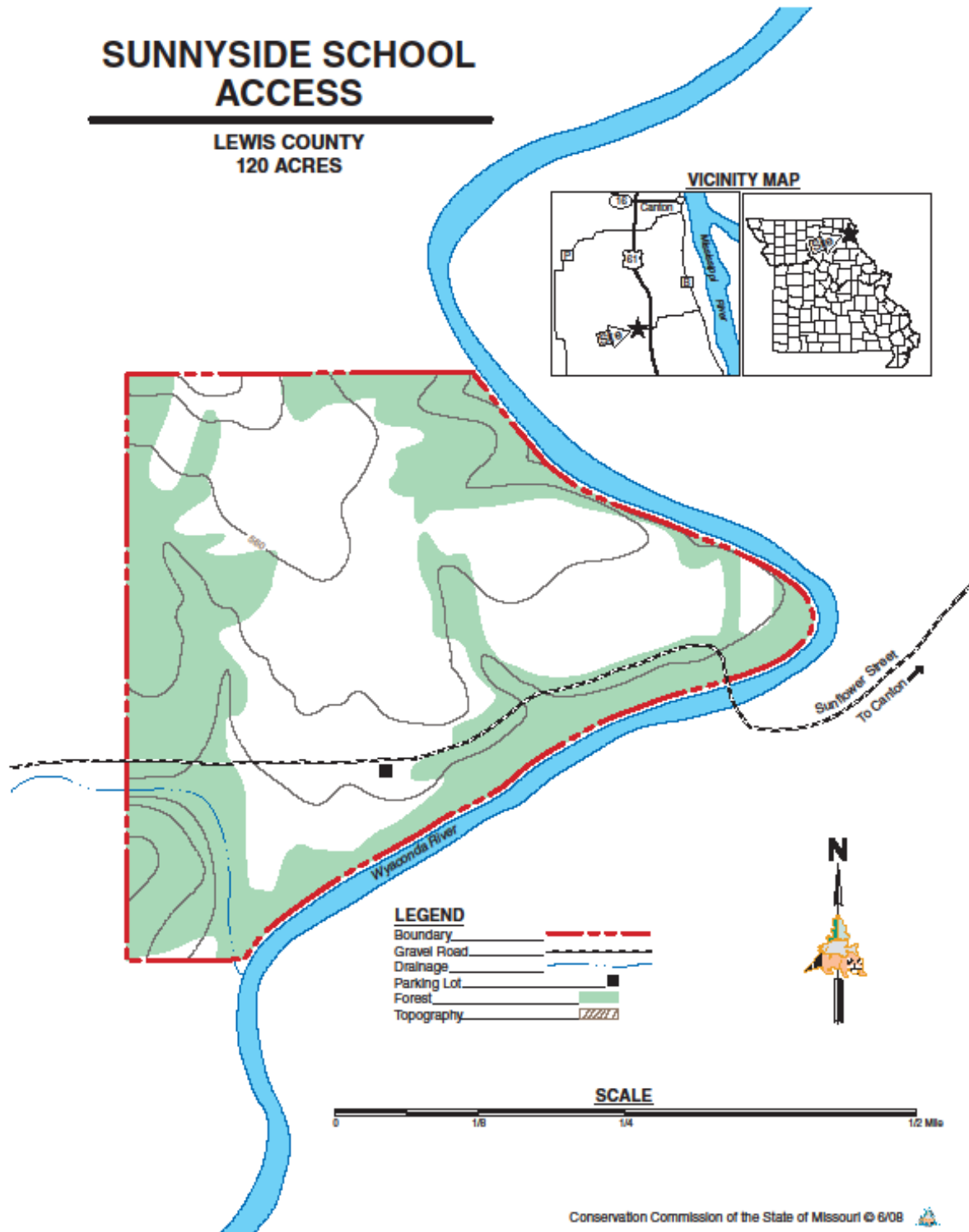
**Appendix 26. Sunnyside School Access Area Background**

This 120-acre access is located in Lewis County along the Wyaconda River. The majority of the access is open land with only 25 percent of the access covered with timber. Management practices used on the access include burning and cropping.

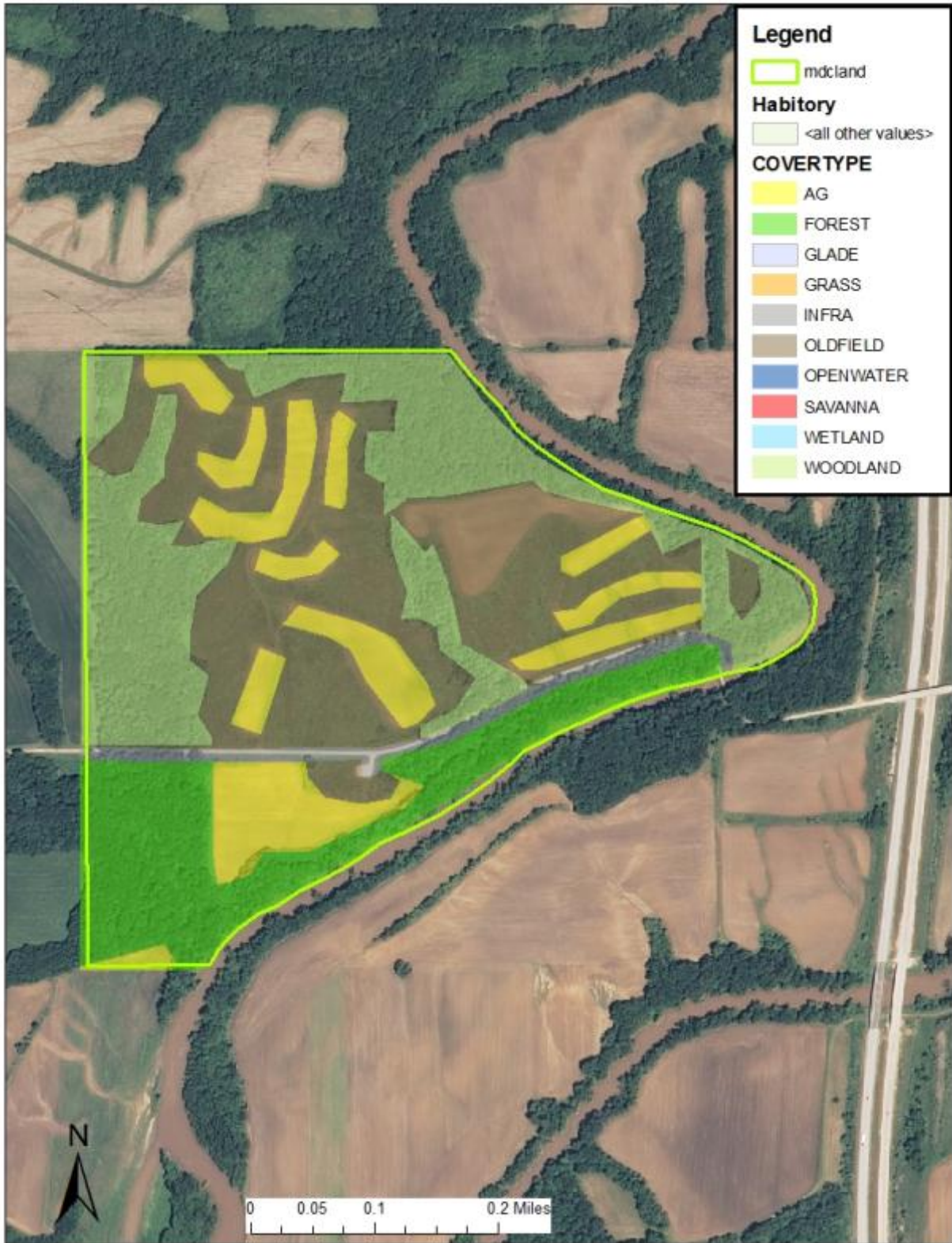
**Current Land and Water Types:**

<b>Land/Water Type</b>	<b>Acres</b>	<b>Feet</b>	<b>% of Area</b>
Grassland/Old field	65		54
Forest	30		25
Cropland/Food Plot	25		21
<b>Totals</b>	<b>120</b>		<b>100</b>
Stream Frontage		5,016	

### Appendix 27. Sunnyside School Access Area Map



Appendix 28. Sunnyside School Access Cover Type Map





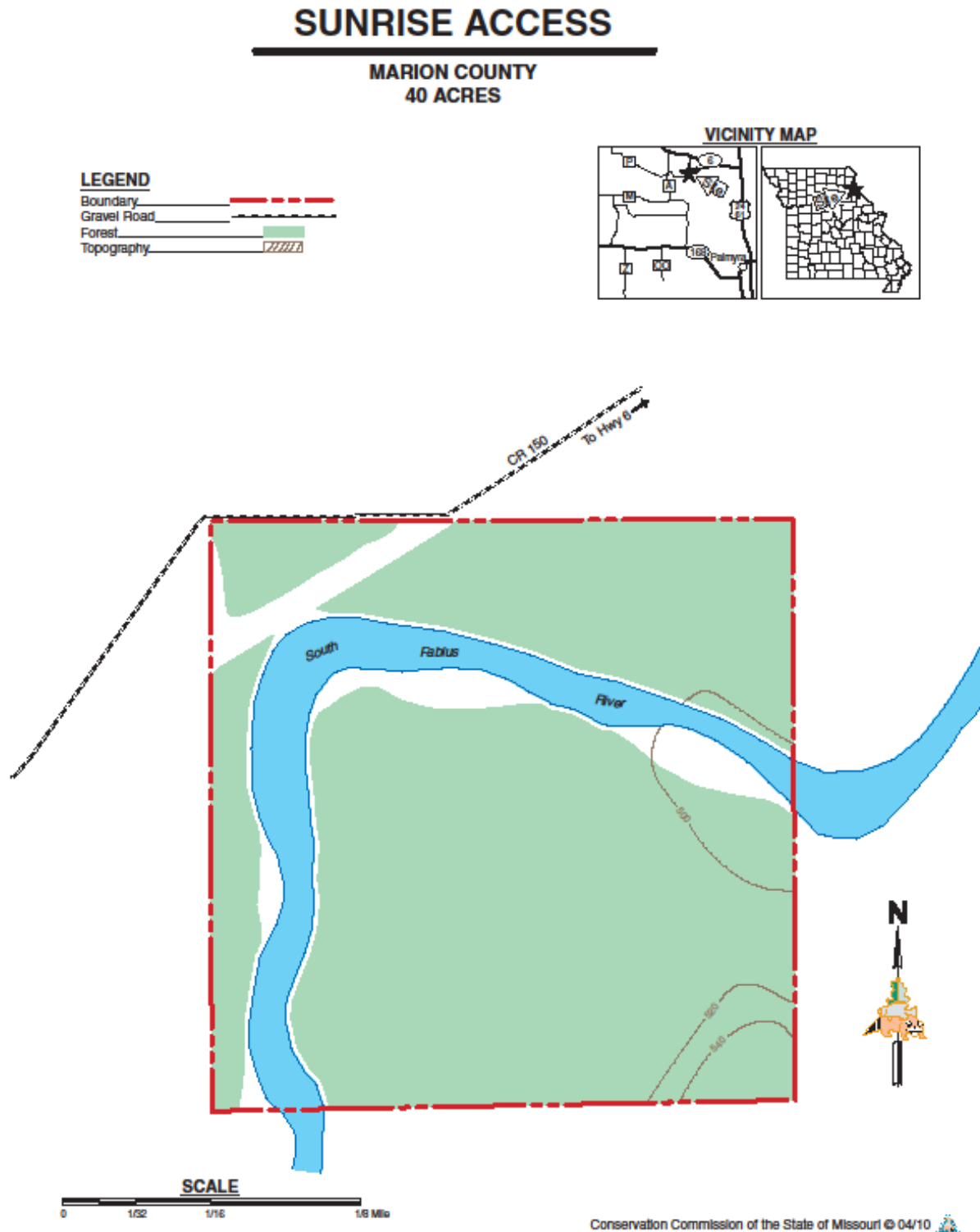
**Appendix 29. Sunrise Access Area Background**

Sunrise Access is located 9 miles northwest of Palmyra, just off County Road 150 in Marion County. Sunrise Access was named after the Sunrise Cemetery that is located nearby. The South Fabius River flows through the middle of this 40-acre access. The majority of the access cannot be accessed for hunting without wading or using a boat to cross the South Fabius River. This access provides an opportunity for bank fishing.

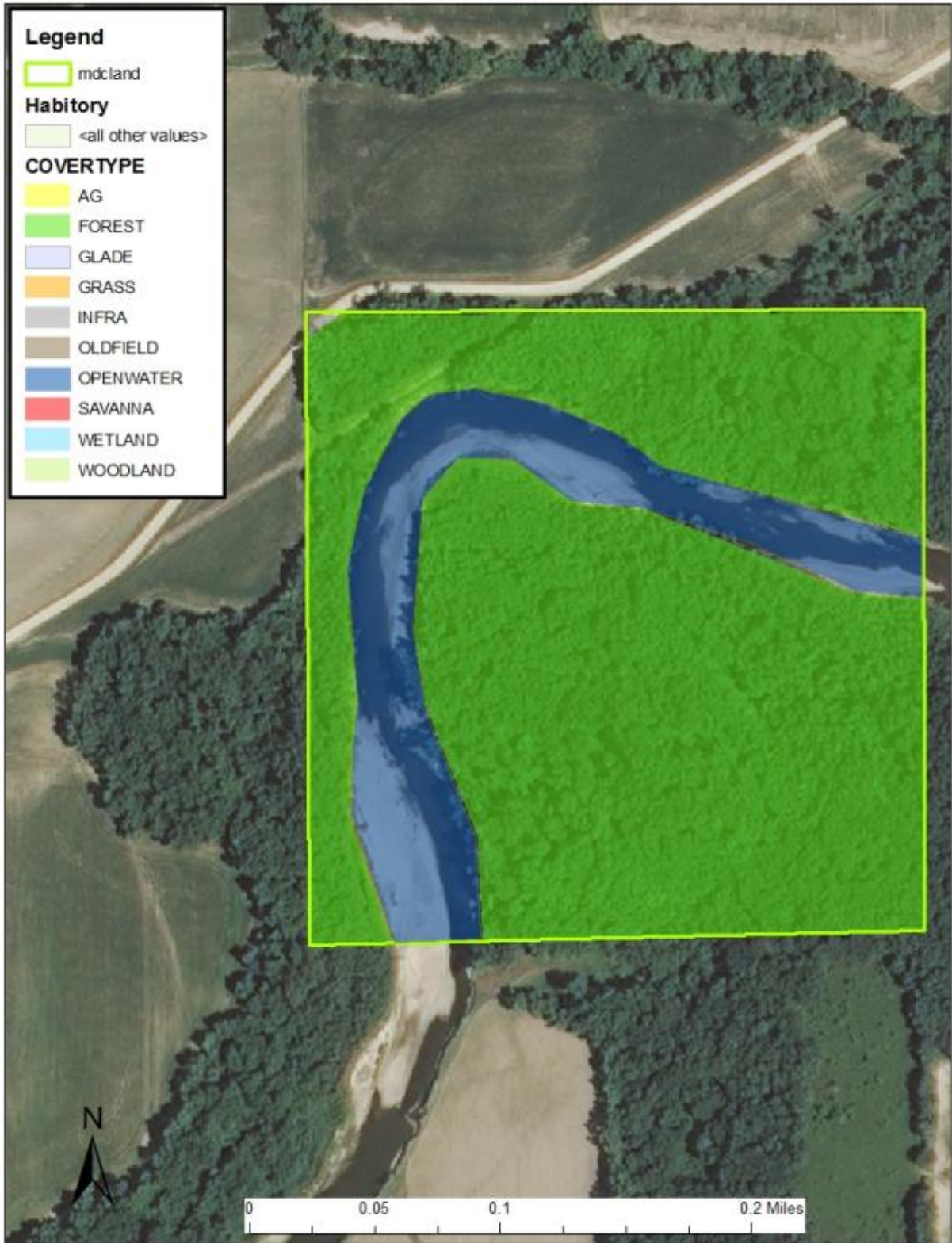
**Current Land and Water Types:**

<b>Land/Water Type</b>	<b>Acres</b>	<b>Feet</b>	<b>% of Area</b>
Forest	40		100
Stream Frontage		2,165	

### Appendix 30. Sunrise Access Area Map



Appendix 31. Sunrise Access Cover Type Map



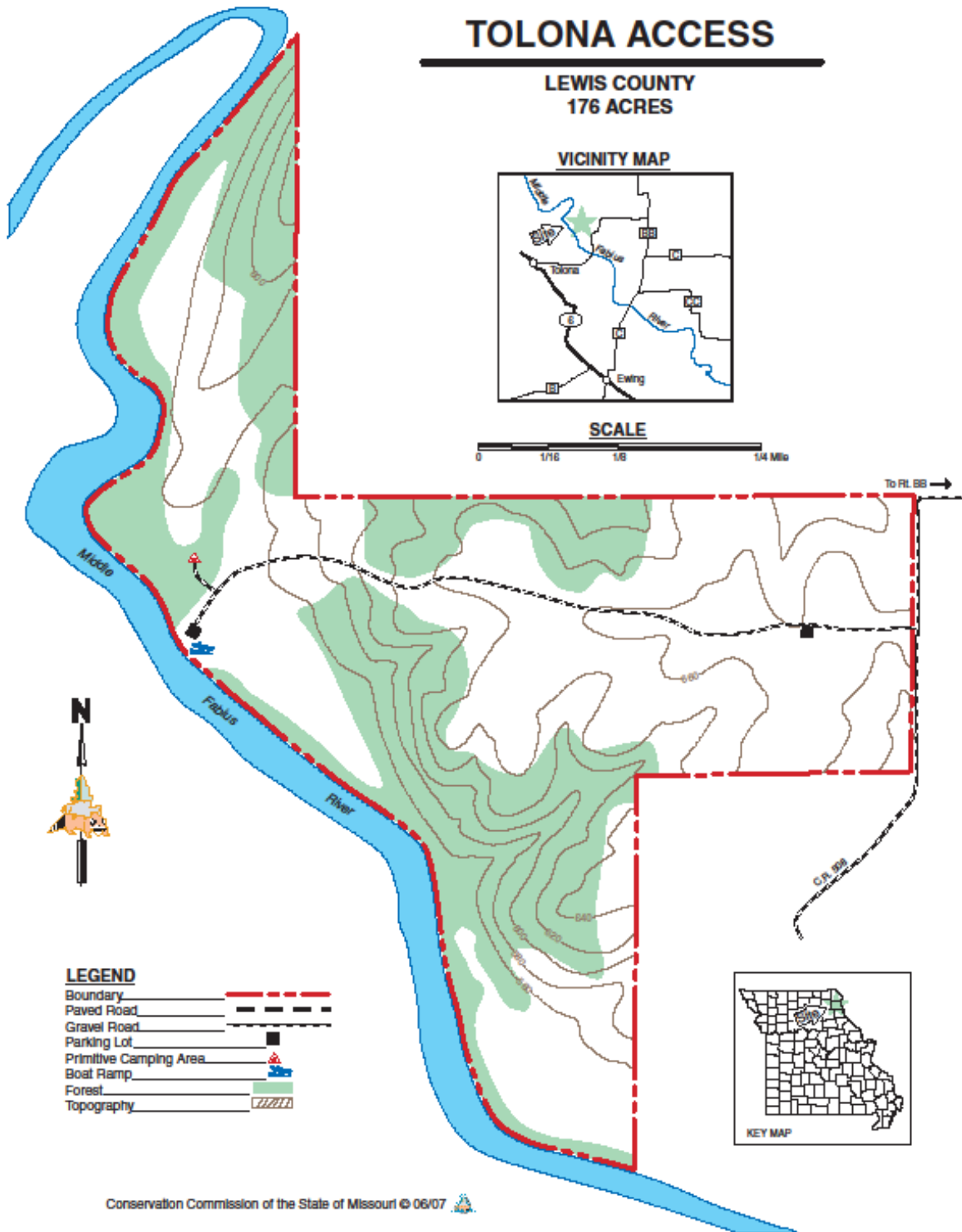
**Appendix 32. Tolona Access Area Background**

This 176-acre access is located in Lewis County along the Middle Fabius River. Approximately one-half of the access is timbered and the other half is old fields. Management of the access includes burning, disking and limited food plot planting. Two camping pads are provided for area users.

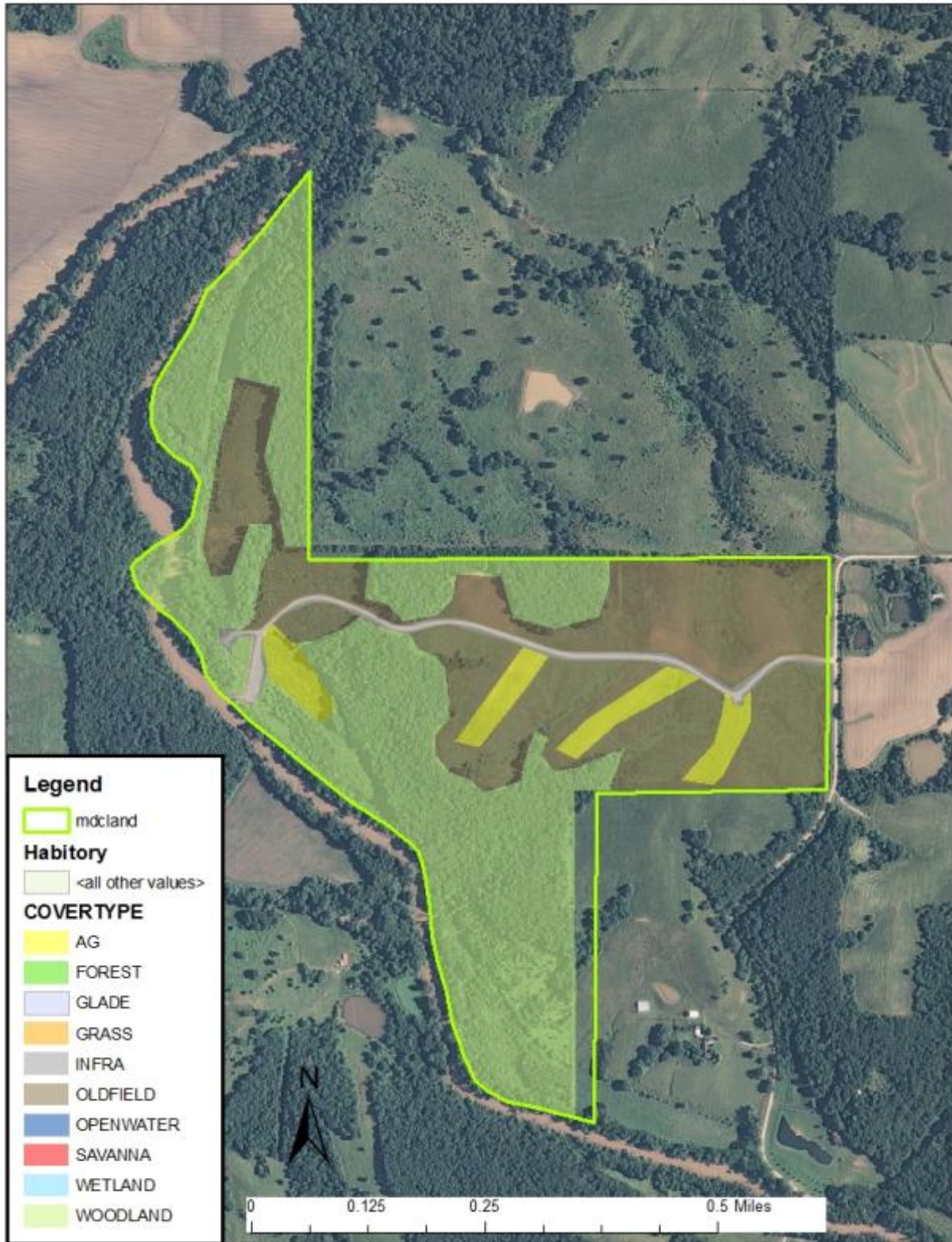
**Current Land and Water Types:**

<b>Land/Water Type</b>	<b>Acres</b>	<b>Feet</b>	<b>% of Area</b>
Forest	94		55
Grassland/Old Field	65		36
Cropland/Food Plot	17		9
<b>Totals</b>	<b>176</b>		<b>100</b>
Stream Frontage		6,917	

Appendix 33. Tolona Access Area Map



**Appendix 34. Tolona Access Cover Type Map**



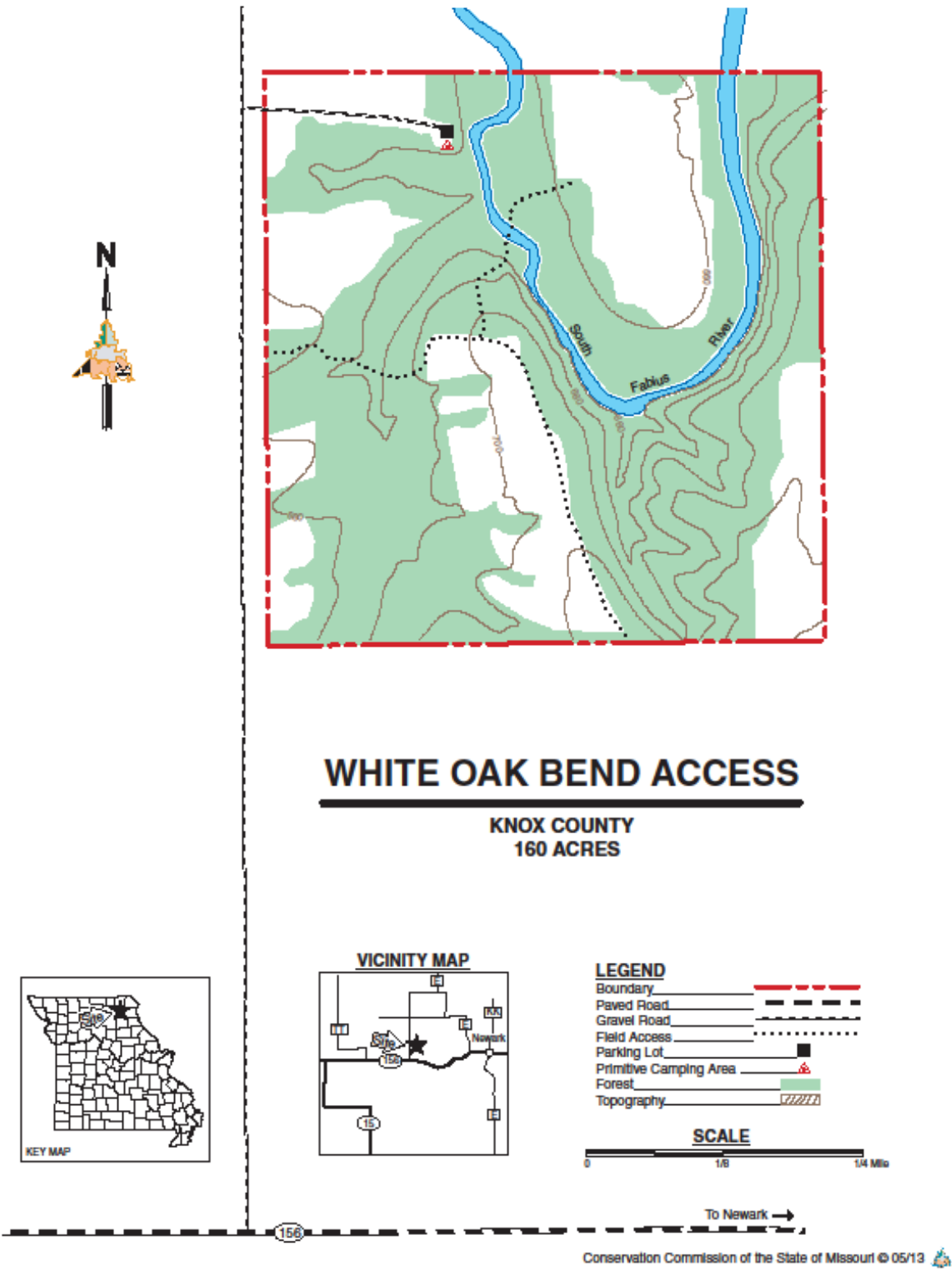
**Appendix 35. White Oak Bend Access Area Background**

This 160-acre is nearly 70 percent timber, the remainder of the access is open land and is managed with fire and food plots. Historically all the open fields were cropped prior to Department acquisition; any native grass on the access are plantings.

**Current Land and Water Types:**

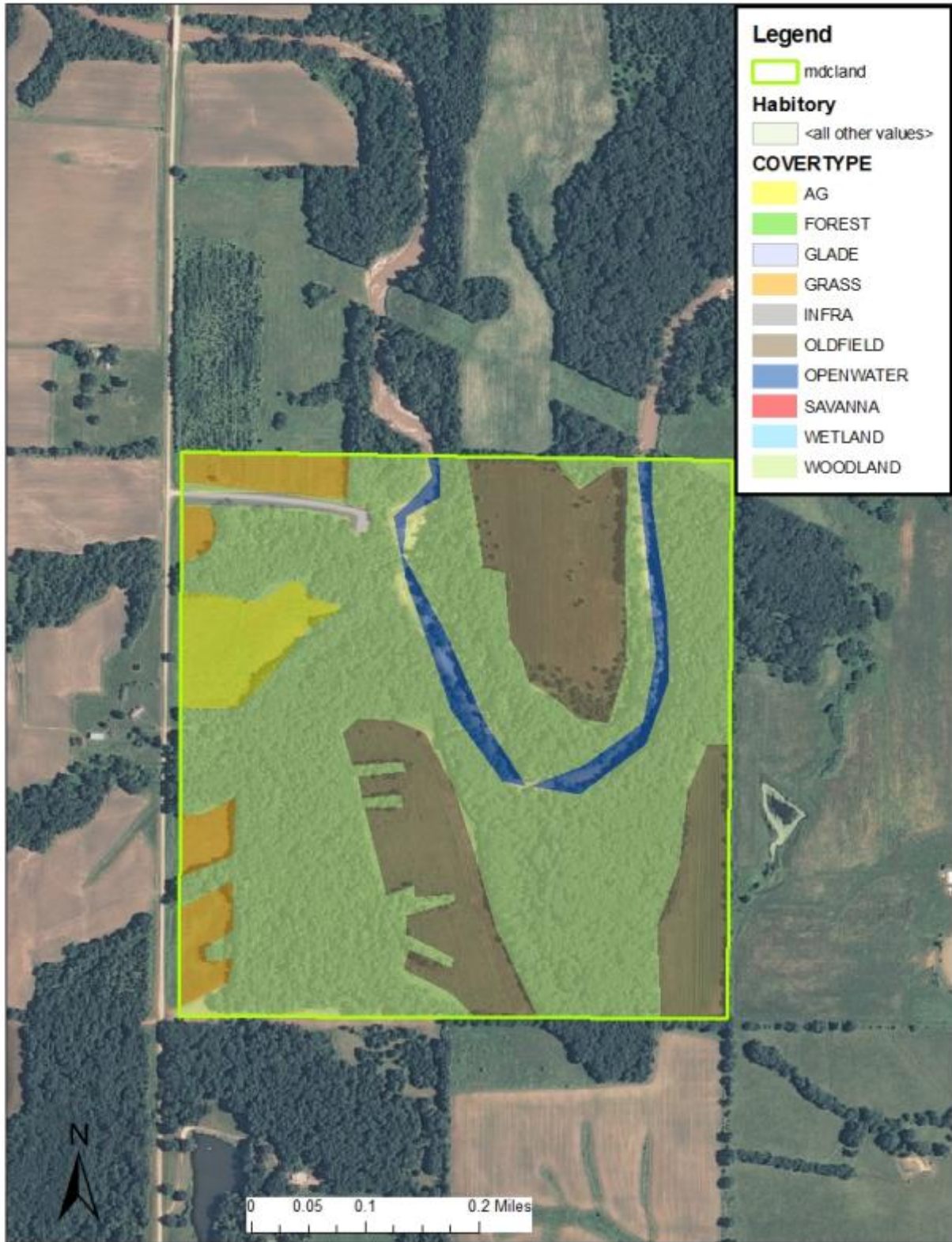
<b>Land/Water Type</b>	<b>Acres</b>	<b>Feet</b>	<b>% of Area</b>
Forest	106		67
Grassland/Old Field	47		29
Cropland/Food Plot	7		4
<b>Totals</b>	<b>160</b>		<b>100</b>
Stream Frontage		3,705	

### Appendix 36. White Oak Bend Access Area Map





# Appendix 37. White Oak Bend Access Cover Type Map



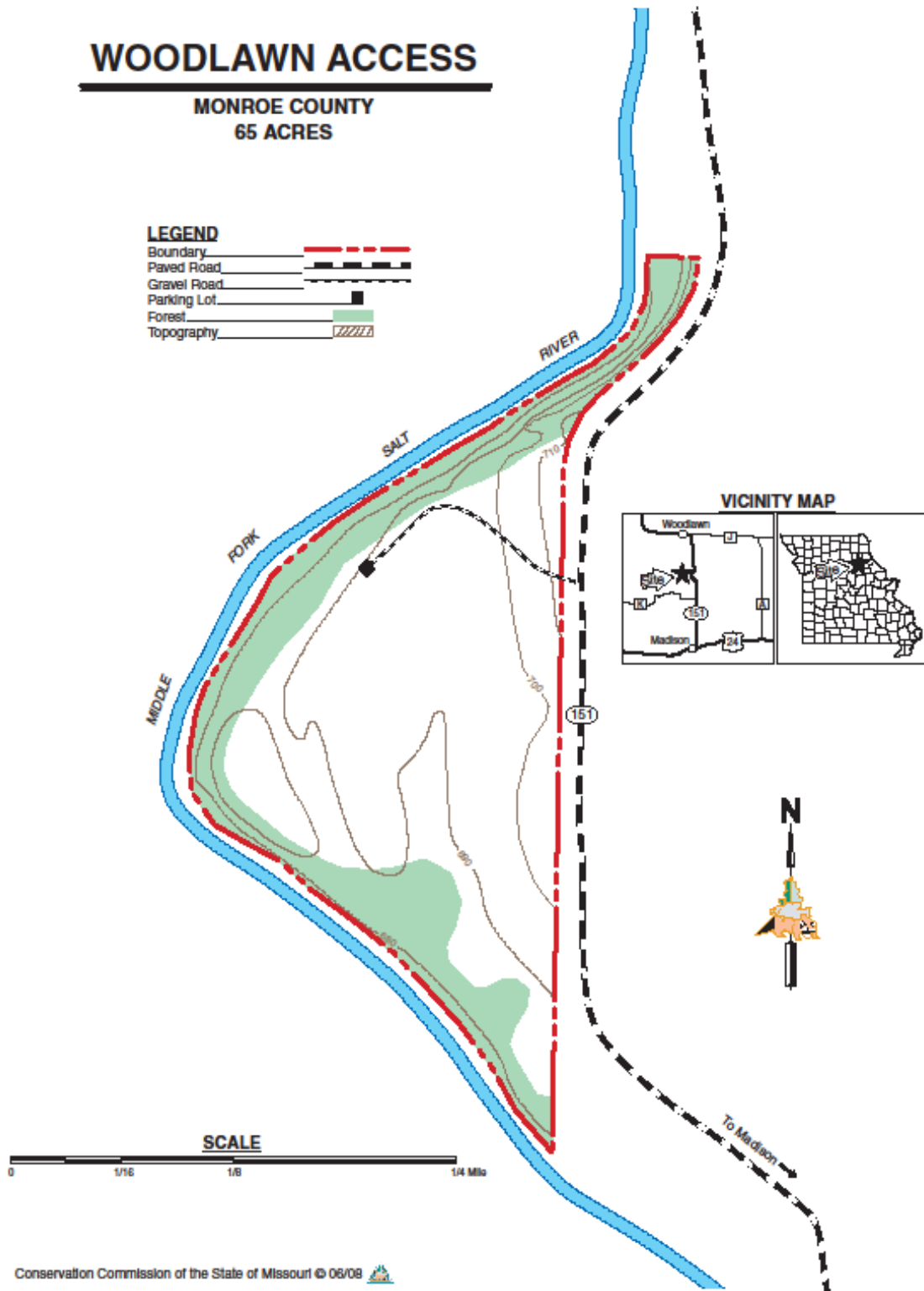
### Appendix 38. Woodlawn Access Area Background

Woodlawn Access is on Highway 151 about 5 miles north of Madison. Habitats on this access include forest, grassland and old-fields. This access offers access to Middle Fork Salt River.

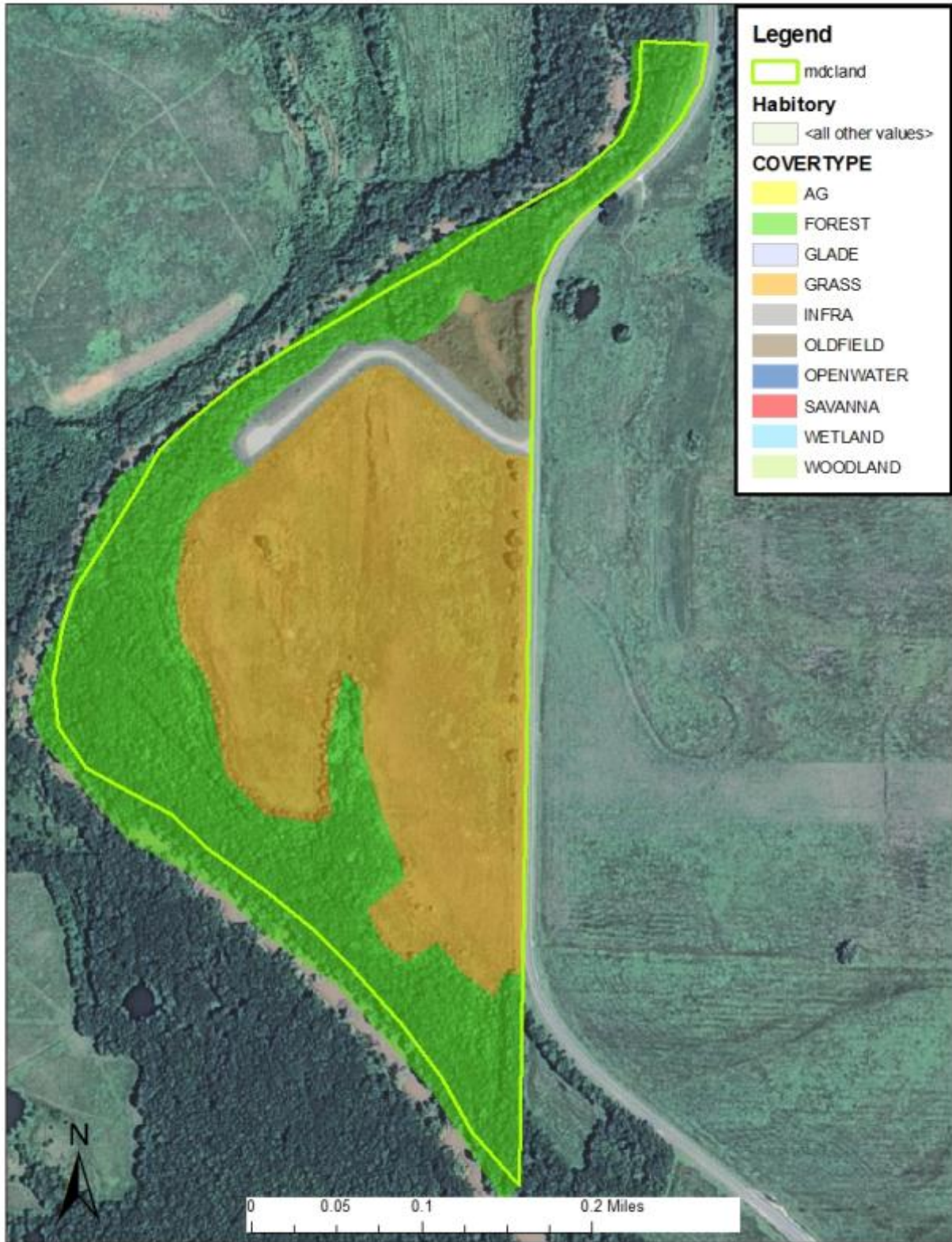
#### Current Land and Water Types:

<b>Land/Water Type</b>	<b>Acres</b>	<b>Feet</b>	<b>% of Area</b>
Forest and Woodland	30		46
Grassland	20		31
Old Field	15		23
<b>Totals</b>	<b>65</b>		<b>100</b>
Stream Frontage		5,280	

Appendix 39. Woodlawn Access Area Map



**Appendix 40. Woodlawn Access Cover Type Map**



**Appendix 41. Northeast Region Stream Accesses Greater Than 40 Acres Management Plan  
Public Comments**

Received during public comment period (July 1-31, 2015):

Woodland Access:

Recommendation # 1, acquire remaining land to the south between the Woodland Access Area and the Hwy 151 Bridge over the middle fork of salt river (approximately 5 acres).

Recommendation # 2, Implementation additional strategies as documented in the Northeast Regions Stream Access Greater than 40 Acres Management Plan. Specifically, apply wildlife management practices to the Woodlawn access by planting food plots in areas designated as "fields/old fields."

Fire as a management tool should not be allowed at White Oak Bend Access. It is 70% Forest. Any open fields should be allowed to re-forest as it was before white settlers cleared it. Consideration should also be given to the fact that it is a relatively small tract surrounded by privately owned crop fields as well as the past history of destruction caused by poorly controlled burns.

Hard copy comment submitted to Chris Williamson (7/13/2015): Here is my comment, My husband and I owned that ground for many years and I am free to say I have walk it all. As for the boat ramp, I believe that is of no use because there isn't enough water to use a boat. But the ground could be made into a pretty place. I would think horse back riding paths to walk that would be cleared. Or night camping and picnic tables. Maybe I shouldn't comment because I haven't been on the ground. I am glad you do burn, as my farm is next to yours it probably wouldn't be good for me because of people coming more. But I do hope you will think about this. I have found mushrooms, wildflowers, picked blackberries. It could be better than Deer Ridge, people could still fish. It has been a long time since I have been on the Tolona, that's the one next to me.

Hard copy comment (7/30/2015): I own the 40 acres to the north [of White Oak Bend Access]. It is about 50% tillable 50% timber. River runs right through middle. I would consider selling. Think would make better access to rive.