

Missouri Outdoor Recreational Access Program (MRAP) Area Map



Area Name: Swaith's Place Tract

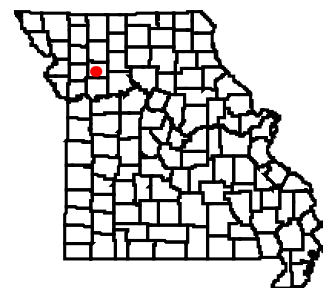
County: Caldwell **Size:** 158.7 acres

Township: 56N, **Range:** 28W, **Sections:** 35

Public Access Type: Youth Hunting and Fishing

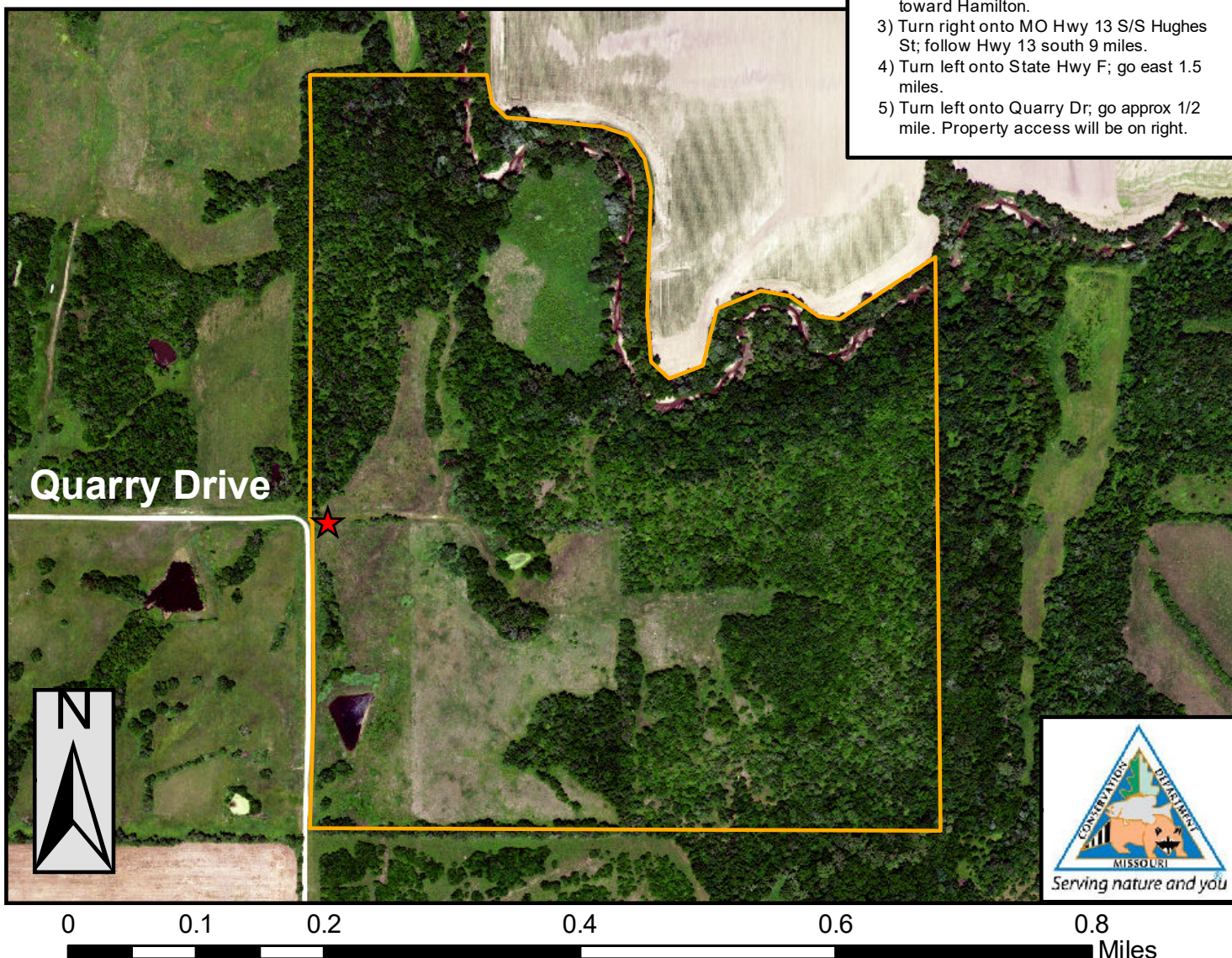
Area open 1 hr before sunrise to 1 hr after sunset

Caldwell County



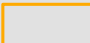

Directions From Cameron:

- 1) Follow US Hwy 36 east 12.5 miles.
- 2) Take the US 36 BUS/MO Hwy 13 exit toward Hamilton.
- 3) Turn right onto MO Hwy 13 S/S Hughes St; follow Hwy 13 south 9 miles.
- 4) Turn left onto State Hwy F; go east 1.5 miles.
- 5) Turn left onto Quarry Dr; go approx 1/2 mile. Property access will be on right.



PLEASE RESPECT PRIVATE PROPERTY
YOUTH WALK-IN HUNTING & FISHING ONLY
ALL OTHER ACTIVITIES PROHIBITED
PARKING IN DESIGNATED AREA ONLY
STAY ON MRAP PROPERTY; NO TRESPASSING
NO TRAPPING
NO LITTERING INCLUDING SPENT SHELLS
NO TARGET SHOOTING, CAMPING, OR ALCOHOL
NO FIREWORKS, BIKING, HORSEBACK RIDING
DO NOT OPEN GATES & AVOID DAMAGING FENCES
NO EQUIPMENT OR GEAR MAY BE LEFT OVERNIGHT

Legend

-  MRAP Boundary
-  Parking and Registration

SPECIAL REGULATIONS APPLY. GO TO: [HTTPS://MDC.MO.GOV/MRAP](https://mdc.mo.gov/mrap)