

Missouri Outdoor Recreational Access Program (MRAP) Area Map



Area Name: SF Tract

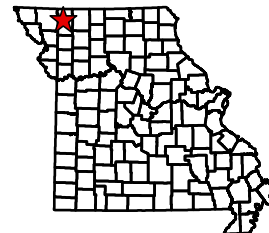
County: Gentry **Size:** 2271 Acres

Township: 64N, **Range:** 32W, **Section:** 13,14,15

Public Access Type: All Access Hunting and Fishing

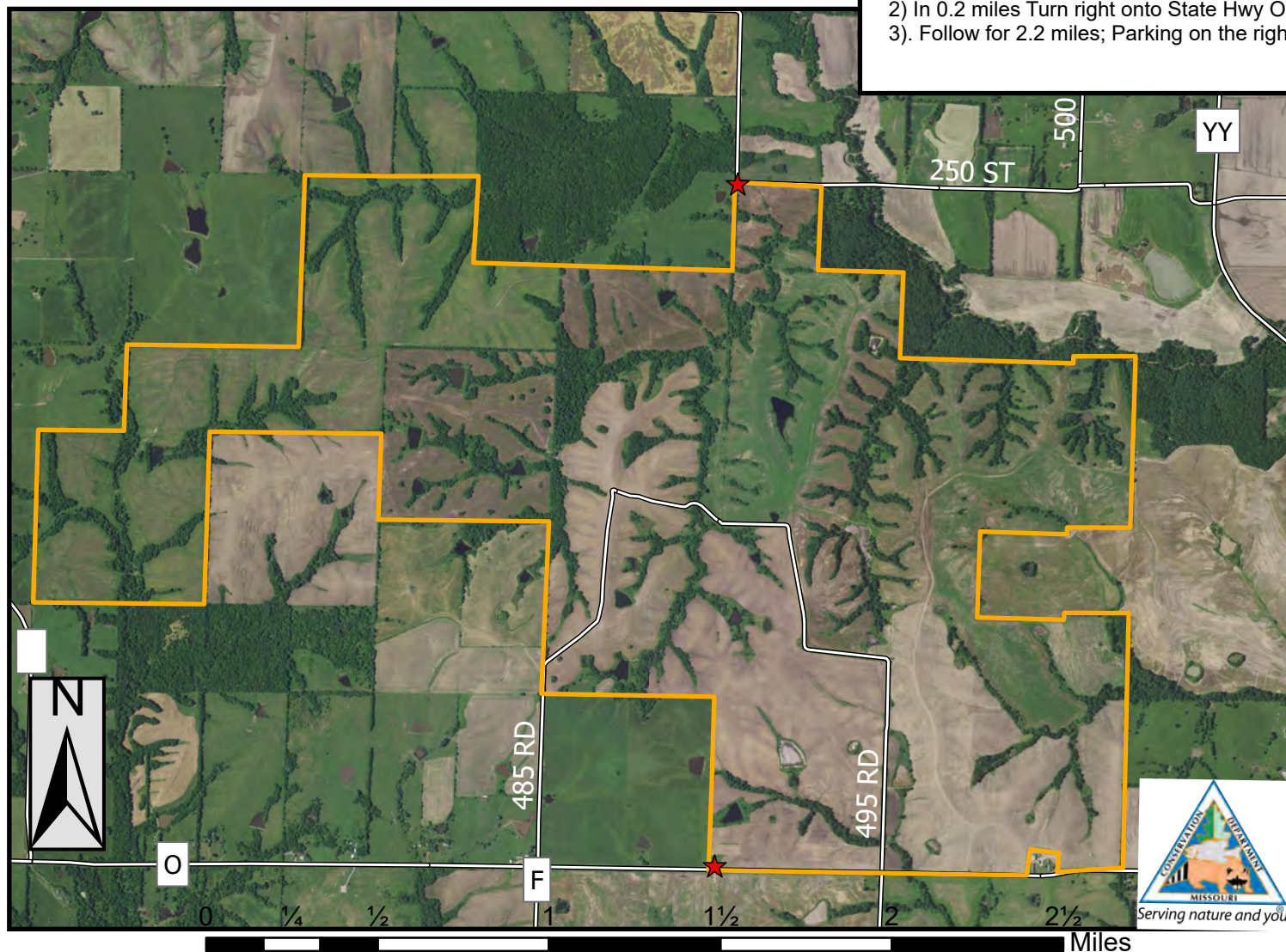
Area open 1 hr before sunrise to 1 hr after sunset

Gentry County



Directions From Gentry:

- 1) Head south on Adams St toward Poplar St.
- 2) In 0.2 miles Turn right onto State Hwy O
- 3). Follow for 2.2 miles; Parking on the right



PLEASE RESPECT PRIVATE PROPERTY
WALK-IN HUNTING & FISHING ONLY
ALL OTHER ACTIVITIES PROHIBITED
PARKING IN DESIGNATED AREA ONLY
STAY ON MRAP PROPERTY; NO TRESPASSING
NO TRAPPING
NO LITTERING INCLUDING SPENT SHELLS
NO TARGET SHOOTING, CAMPING, OR ALCOHOL
NO FIREWORKS, BIKING, HORSEBACK RIDING
DO NOT OPEN GATES & AVOID DAMAGING FENCES
NO EQUIPMENT OR GEAR MAY BE LEFT OVERNIGHT

Legend

- MRAP Boundary
- ★ Parking and Registration

SPECIAL REGULATIONS APPLY. GO TO: [HTTPS://MDC.MO.GOV/MRAP](https://mdc.mo.gov/mrap)