

Missouri Outdoor Recreational Access Program (MRAP) Area Map



Area Name: Vanzant Acres Tract

County: Douglas **Size:** 314 acres

Township: 26N, Range: 12W, Sections: 17,18

Public Access Type: All Access Hunting and Fishing

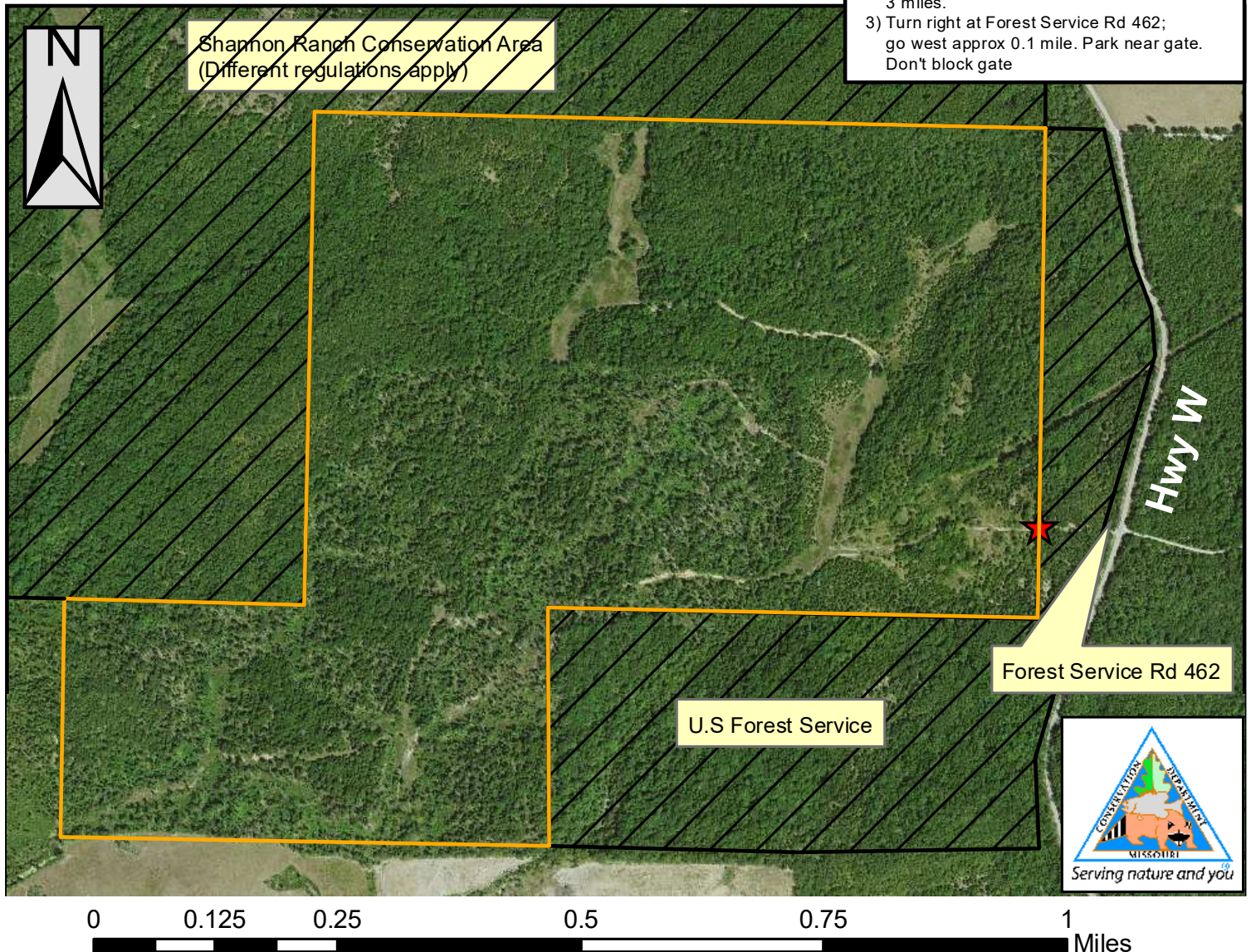
Area open 1 hr before sunrise to 1 hr after sunset

Douglas County



Directions From Mountain Grove:

- 1) Follow Hwy 95 south approx 12 miles.
- 2) Turn left onto Hwy W; go approx 3 miles.
- 3) Turn right at Forest Service Rd 462; go west approx 0.1 mile. Park near gate. Don't block gate



PLEASE RESPECT PRIVATE PROPERTY
WALK-IN HUNTING & FISHING ONLY
ALL OTHER ACTIVITIES PROHIBITED
PARKING IN DESIGNATED AREA ONLY
STAY ON MRAP PROPERTY; NO TRESPASSING
NO TRAPPING
NO LITTERING INCLUDING SPENT SHELLS
NO TARGET SHOOTING, CAMPING, OR ALCOHOL
NO FIREWORKS, BIKING, HORSEBACK RIDING
DO NOT OPEN GATES & AVOID DAMAGING FENCES
NO EQUIPMENT OR GEAR MAY BE LEFT OVERNIGHT

Legend

- MRAP Boundary
- Parking and Registration

SPECIAL REGULATIONS APPLY. GO TO: [HTTPS://MDC.MO.GOV/MRAP](https://mdc.mo.gov/mrap)